



Greenext
Sustain the Success

HERBAL PRODUCT CATALOG



Success Chain™



Greenext

Sustain the Success

Committed to its values, **SUCCESS CHAIN™** exists to make the power of plants the source of sustainable success for its stakeholders.

For our stakeholders;

- ◇ Organic & Conventional Extracts Custom Production for your needs
- ◇ Sustainable and planned supply
- ◇ Standardized product
- ◇ Organic Certified products
- ◇ Organic Certified Complex products
- ◇ Contract Agriculture
- ◇ Controls the process from seed to delivery of the product





Success Chain™

TURKEY'S FIRST STANDARDIZED **COSMOS-CERTIFIED ORGANIC** EXTRACT PRODUCER...

Success Chain™, which exists for the sustainable success of its stakeholders fueled by **R&D** and innovation, is pleased to start the production of **Cosmos Certified Organic** and **Natural Extract, NOP Certified Organic Essential Oil and Organic Hydrosol** in its factory in **Torbali, Izmir**.

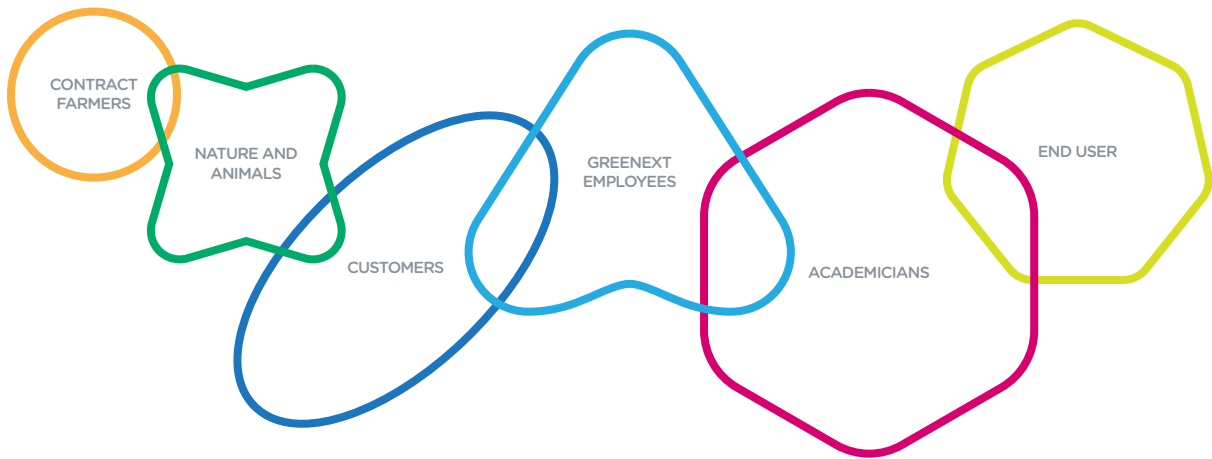




We focused on the collective success of the whole chain, not the success of individual stakeholders.

SUCCESS CHAIN™

Created to ensure the sustainable success of all stakeholders.



Greenext offers its natural herbal raw materials, which have successfully passed the quality and certification process and standardized for different sectors, to its customers in the domestic and international markets.

Greenext, which manufactures in its factory in **Torbali, Izmir**, works for the success of all stakeholders in the ecosystem and provides an end-to-end sustainable success chain.

This is called **Success Chain™**

Success Chain™ is based on sustainable success. Solid long-term relationships are built between stakeholders.

Focuses on the collective success of the chain, not the success of individual stakeholders. Enables end-to-end adaptation and knowledge transfer.



**Creating the success chain ecosystem on
which the sun never sets.**

Greenext is committed to providing high-performance natural active ingredients while keeping the carbon footprint as low as possible.

It aims to maintain solid long-term relationships with its stakeholders. Seeks to optimize and perfect the chain of success it has established over the years. Responds to the needs of its national and international customers most accurately with its innovations.

In 2030, to create the **Success Chain™** ecosystem in the organic and natural herbal extract category, on which the sun never sets... This is our vision.

There is only one Earth to live on. We are grateful for what nature has generously given us and it is our greatest duty to protect it.

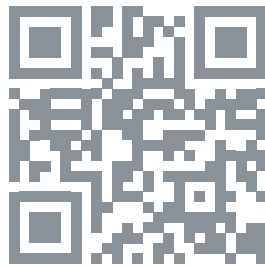
As an ethically conscious company, we are committed to minimizing our potential environmental impact.

Investing in biotechnology and creating sustainable resources is central to our commitment to respect nature.

Committed to its values, making the power of plants the source of sustainable success for **Success Chain™** stakeholders...

This is our mission.

You can contact us to be part of our collective chain of success.



greenext.com.tr



AN ECOSYSTEM WITH ALL STAGES SECURED

Supply system security with contract farming

Trust-oriented, traceable and auditable agricultural products, which start with the production of our contracted farmers, **constitute the first link in the Sustainable Success Chain.**

With our contracted farmers in Turkey and different countries around the world, we supply plants with planning that meets the needs of our customers. In this way, the continuity of the links of the chain starts in the field.

Global standards with technical documentation.

The highest possible benefit from a plant is in its extract form. To obtain this form, the **Greenext** team has obtained all necessary certifications and accreditations.

Chain protected by product standardization.

Greenext; always aims to be perfect. It manufactures its products to the required standards and supplies them to its business partners with the required technical documentation.



By establishing strong ties between academia and the industry, we adapt current technologies to our system.

We work by combining the relentless dynamism of science with the development of our production technologies for use in food, pharmaceuticals and cosmetics. In this way, we maintain global relevance for the success of all our stakeholders.



Liposome / Encapsulation

Liposomes are bilayer spherical lipid vesicles composed of polar lipids used in many sectors such as the pharmaceutical, chemical and food industries to encapsulate both hydrophobic and hydrophilic compounds.

Polar lipids are dispersed in a polar medium such as water.

It has been observed that agents encapsulated with liposomes prevent degradation reactions that may occur with the effect of the external environment, thanks to the cessation of their interaction with the system they are in.

It has also been observed that controlled release of active agents into the environment can be realized and thus encapsulated compounds such as antimicrobial, antioxidant and vitamins are more resistant to processes such as pasteurization, drying, cooking and frying.

Lyophilization / Freeze Drying

Lyophilization is the freeze-drying process of products. It is generally used for the dehydration of products without losing their basic properties. It is the process of freezing the product completely and sublimating the ice crystals formed under a vacuum atmosphere.

Since it is an application that takes place at low temperatures, it is a drying technique that provides dehydration without damaging the molecular and physical structure of the product.

The lyophilization process is carried out in devices called Lyophilizers / Freeze Dryers. It is a preferred method for valuable and thermally sensitive products. The dried product retains its shape, color and aromatic structure.



Provides drying without damaging thermally sensitive products. It offers a wide range of alternative preparation and drying options for different product types and quantities.

The product can be dried in the final product container. Sterile drying is possible. It offers fast dehydration.



Spray Dryer

With spray drying, substances in liquid form are converted into powder form. The feed is sprayed (atomized) into the hot dryer chamber to remove moisture. With spray drying, a spherical powder product with a homogeneous particle size distribution is obtained.

Compared to other drying methods, the drying time is shorter, which is advantageous for drying products that are sensitive to temperature. Spray drying is widely used in the food industry. This is due to the heat sensitivity of foods and consumers' interest in powdered products.

General Advantages of Spray Drying;

It provides drying in a short time. Short processing time is important for drying temperature-sensitive products. Can be operated at high capacities. Low cost. Can be worked continuously and systematically.

Centrifuge

Basically, it is a separation method. Using the centrifugal force from the rotational motion, the particles in the sample are separated according to their shape, size and density.

It is used for the separation of suspensions containing different densities in two or more phases using centrifugal force, i.e. it can be used for liquid-liquid separation, liquid-liquid-solid separation or liquid-solid separation.



Supercritical (CO₂) Extraction

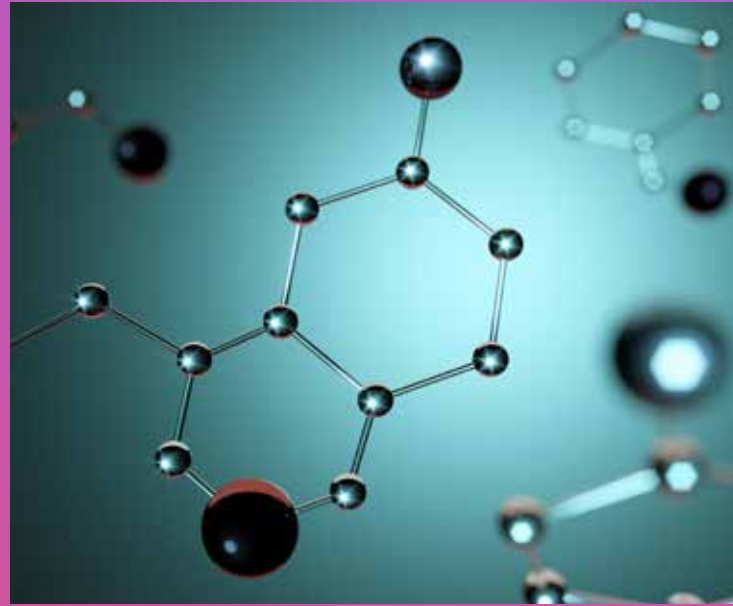
Supercritical fluid extraction is the process of separating the desired substance from any mixture with the help of a suitable solvent.

The physico-chemical properties of supercritical fluids are between those of liquids and gases.

This property makes supercritical fluids a more efficient solvent.

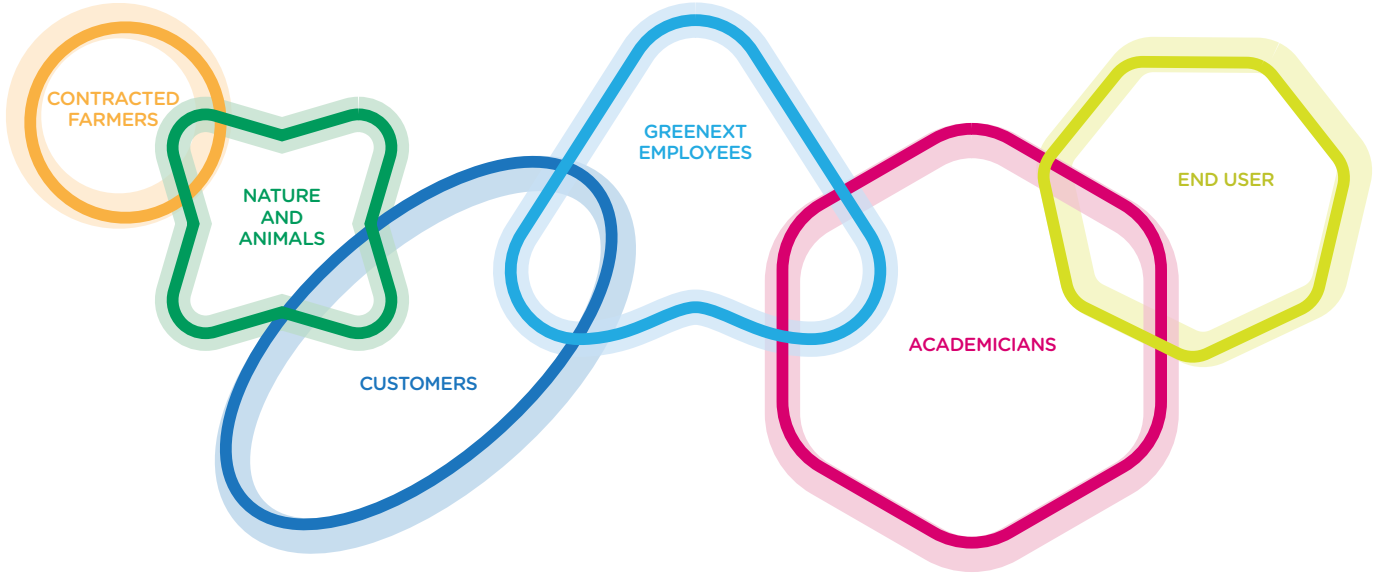
Carbon dioxide (CO₂) is often the fluid/solvent of choice due to its properties such as low critical temperature and pressure, non-flammable or non-toxin and non-harmful to the environment compared to other organic solvents.

At the end of the extraction process with supercritical fluids, the fluid can be easily separated from the solute by reducing the pressure.



SUCCESS CHAIN™

Created to ensure the sustainable success of all stakeholders.



Greenext offers its natural herbal raw materials, which have successfully passed the quality and certification process and standardized for different sectors, to its customers in the domestic and international markets. **Greenext**, which manufactures in its factory in Torbalı, Izmir, works for the success of all stakeholders in the ecosystem and provides an end-to-end sustainable success chain.

This is called **Success Chain™**

Success Chain™ is based on sustainable success. Solid long-term relationships are built between stakeholders. Focuses on the collective success of the chain, not the success of individual stakeholders. Enables end-to-end adaptation and knowledge transfer.



CONTRACTED FARMERS

The first link in our chain of success;

Trust-oriented, traceable and auditable products that start with the production of our contracted farmers constitute the first link in the Chain of Success. Thanks to **Greenext**, farmers who want to keep plant quality and yield at the highest level can grow good crops and continue to maximize their commercial earnings. In this way, they achieve sustainable success. If you would like to be a part of **Greenext's** chain of success, you can contact us by filling out the contract farmer application form on our website.



NATURE AND ANIMALS

The source of our sustainable success is the power of nature;

While ensuring that the ingredients of plants are preserved in the products we offer, we do not neglect respect for nature and animals. When farming, we work to ensure that the habitats of animals are not harmed and we pay special attention to ensure that they are not used in R&D activities. We make it our mission to always protect nature and animals, and we are inspired by the sustainability of nature when designing processes. In this way, we make the power of nature the source of our sustainable success.



CUSTOMERS

Commercial partnership turns into sustainable success;

The herbal extract needed is determined through interviews with R&D Managers and SME Bosses. Greenext quickly adapts to conditions with the simplicity and agility of its processes. In addition to his expertise, it contributes to the processes with his agile personality. Thus, commercial partnership turns into sustainable success.



GREENEXT EMPLOYEES

In our view, development is the key to sustainable success;

Greenext employees work primarily for the sustainable success of stakeholders. They want to feel valued, be happy with their work and always want to improve their careers. **Greenext** always listens to its employees' wishes and prioritizes their happiness and motivation. It takes actions to support both their personal and professional development. Thus, making development the key to sustainable success.



ACADEMICIANS

The strong link between academia and industry;

We have always valued the contributions of scientists who want to create added value first for science and then for the development of the sector with their academic studies. At **Greenext**, we bring scientists into the holistic ecosystem and accelerate them by providing them with resources. In this way, we create a strong link between academia and industry.



END USER

Meeting the expectations of the end user enables the success of all stakeholders;

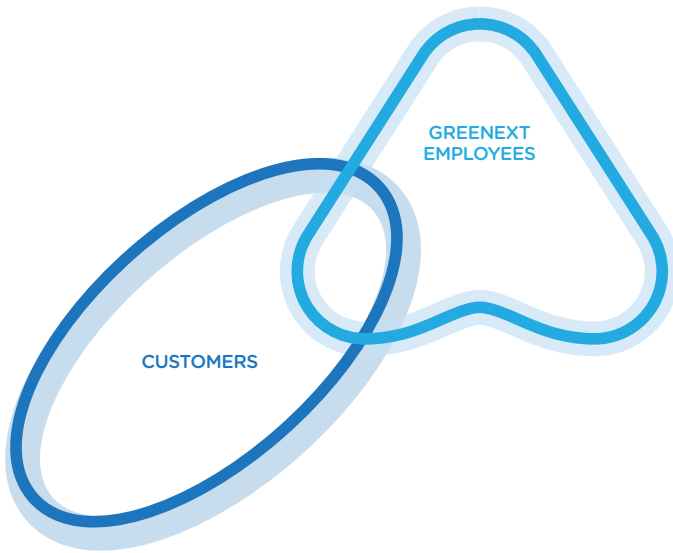
The last link in the process starting from the seed is the end user. They buy and use successful products made from standardized raw materials. The motivation of the end-user is to achieve effective positive results linked to the purpose of purchasing the product. **Greenext** sees its value as more than just the supply of extracts. It provides innovation and technologies that will benefit its partners' end products. In this way, meeting the expectations of the end user enables the sustainable success of **Greenext** customers.



GREENEXT G35 COMPLEX



As a result of the **R&D efforts** of **Greenext** employees, ready-made **Extract Complexes** have been developed for our **Customers** who are **Succes Chain™** stakeholders.



**COSMOS CERTIFIED
ORGANIC COMPLEX EXTRACTS**

ANTI-AGING COMPLEX

MOISTURISING COMPLEX

BRIGHTENING COMPLEX

HAIR CARE COMPLEX

ANTI-BLEMISH COMPLEX

SOOTHING COMPLEX

The efficacy of Brightening Complex, Anti-Aging Complex, Moisturizing Complex, Anti-Blemish Complex, and Soothing Complex has been proven through in-vitro testing without animal experiments.

**CONVENTIONAL
COMPLEX EXTRACTS**

GREEN5 COMPLEX

GREENEXT G17 COMPLEX

GREENEXT G25 COMPLEX

GREENEXT G35 COMPLEX

GREENEXT G36 COMPLEX

GREENEXT G64 COMPLEX

GREENEXT G70 COMPLEX

COLLAGEN COMPLEX

HERBA PET COMPLEX

MCU COMPLEX

NATURAL BURN COMPLEX

COSMOS CERTIFIED ORGANIC ANTI-AGING COMPLEX



FORMULATION ENRICHED WITH HERBS TO HELP FIGHT WRINKLES ON THE SKIN

Everlasting (immortelle) Extract
Helichrysum italicum extract



PRODUCT DESCRIPTION

Everlasting (immortelle) (*Helichrysum italicum*), Turkish Oregano (*Origanum onites*), Juniper (*Juniperus communis*) Berry Fruit, Olive (*Olea europaea*) Leaf are dried, ground, extracted with solvent and concentrated by evaporation. Concentrated extracts are prepared in a mixture of glycerin and preservatives and are filtered cleanly after mixing for a while. The filtered extracts are complexed by considering certain ratios.





ETKO ORGANIC CERTIFICATE



COSMOS CERTIFICATE INGREDIENT



GLUTEN FREE



ORGANIC PRODUCTION

BENEFITS

It aims to help delay the signs of aging. Thanks to its rich content, it has cell regenerative properties. It nourishes and tightens the natural texture of the skin and thus prevents the formation of wrinkles. It has the effect of increasing the elasticity of the skin and improving the skin tone. It also contains ingredients that support skin health, such as antioxidants and collagen.

MAJOR ACTIVE INGREDIENTS

Oleuropein, Carvacrol, α -pinene, Geraniol.

INCI NAME

Helichrysum italicum extract
Origanum onites extract
Juniperus communis fruit extract
Olea europea leaf extract

RECOMMENDED USAGE

It's suitable for use over skin as a cosmetic product.

APPLICATIONS

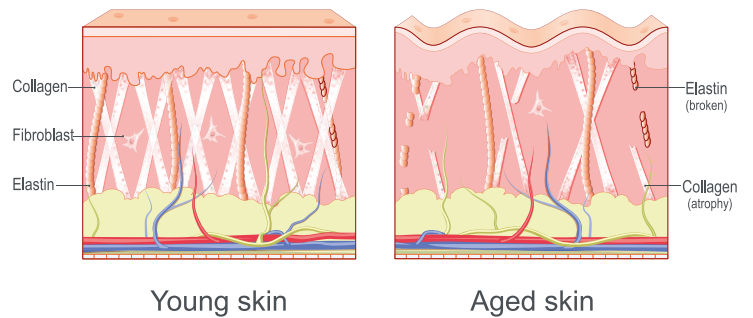
It is used for skin care, anti-aging applications.

EFFICIENCY

The efficacy of Anti-Aging Complex has been proven through in-vitro testing without animal experiments.

TYPE OF PACKING

Plastic packages made of HDPE material.



Recommended Dosage
%0,5-2



TYPES OF PACKING

KEY INGREDIENT



Everlasting (immortelle) Extract

Helichrysum italicum extract

Thanks to its rich content, it is well known for its cell regenerative properties. It nourishes and strengthens the natural texture of the skin.



Turkish Oregano Extract

Origanum onites extract

It reduces the appearance of wrinkles and tightens the skin.



Juniper Berry Fruit Extract

Juniperus communis fruit extract

It tightens the skin and prevents the formation of wrinkles. In addition, the compounds in its content have antioxidant and anti-inflammatory effects.



Olive Leaf Extract

Olea europea leaf extract

Its rich content helps revitalize the skin by providing strong antibacterial, antioxidant and anti-aging effects.

Organic Glycerine

Sodium Benzoate

Potassium Sorbate

Sodium Hyaluronate

Benzyl Alcohol

Dehydroacetic Acid



COSMOS CERTIFIED ORGANIC ANTI-BLEMISH COMPLEX



**ENRICHED FORMULATION WITH HERBS TO HELP
REMOVE SKIN BLEMISHES**

Licorice Root Extract
Glycyrrhiza glabra root extract



PRODUCT DESCRIPTION

Licorice (*Glycyrrhiza glabra*) Root, Rosahip (*Rosa canina*) Fruit, St. John's Wort (*Hypericum perforatum*), Myrtle (*Myrtus communis*) Leaves are dried, ground, extracted with solvent and concentrated by evaporation. Concentrated extracts are prepared in a mixture of glycerin and preservatives and are filtered cleanly after mixing for a while. The filtered extracts are complexed by considering certain ratios.





ETKO ORGANIC CERTIFICATE



COSMOS CERTIFICATE INGREDIENT



GLUTEN FREE



ORGANIC PRODUCTION

BENEFITS

It acts against skin blemishes, acne scars and other skin imperfections. It targets acne and pimples on the skin with the active ingredients it contains. It prevents the formation of acne, reduces the appearance of existing acne and blackheads. It reduces the appearance of blemishes on the skin and evens out the skin tone. It helps to achieve a brighter skin by targeting redness and spots especially after acne. The anti-inflammatory components contained in the complex reduce inflammation in the skin and relieve redness. In this way, it helps the skin to gain a calmer and more relaxed appearance. It provides the skin's natural oil balance and regulates excessive oil production. It reduces the roughness of the skin, tightens the pores and makes the skin look cleaner, healthier and fresher.

MAJOR ACTIVE INGREDIENTS

Glycyrrhizin, L-Ascorbic acid, Hypericin, 1,8-cineole.

INCI NAME

Glycyrrhiza glabra root extract
Rosa canina fruit extract
Hypericum perforatum extract
Myrtus communis leaf extract

RECOMMENDED USAGE

It's suitable for use over skin as a cosmetic product.

APPLICATIONS

It is used for skin care and anti-blemish applications.

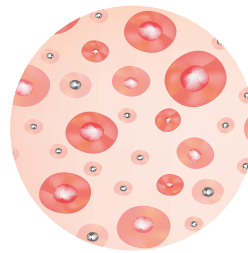
EFFICIENCY

The efficacy of Anti-Blemish Complex has been proven through in-vitro testing without animal experiments.

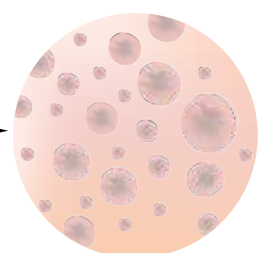
TYPE OF PACKING

Plastic packages made of HDPE material.

Inflamed skin with acne and pimples



Skin scars after acne and pimples



Recommended Dosage
%0,5-2

TYPES OF PACKING



KEY INGREDIENT



Licorice Root Extract

Glycyrrhiza glabra root extract

It nourishes and strengthens the natural texture of the skin. It fights skin blemishes, brightens the skin and makes it look more alive.



St. John's Wort Extract

Hypericum perforatum extract

It has wound healing effects on the skin. It reduces redness on the skin due to various reasons and helps to remove blemishes.



Myrtle Leaf Extract

Myrtus communis leaf extract

It helps to balance, moisturize, tighten and revitalize the skin.



Rosahip Fruit Extract

Rosa canina fruit extract

Thanks to its rich content, it provides a brightening effect and antioxidant effect on the skin. Emphasizes the natural glow of the skin. Reduces the visibility of acne and acne scars and blemishes.

Organic Glycerine

Sodium Benzoate

Potassium Sorbate

Benzyl Alcohol

Dehydroacetic Acid



COSMOS CERTIFIED ORGANIC BRIGHTENING COMPLEX



ENRICHED FORMULATION WITH HERBS THAT HELP SKIN BRIGHTENING

Licorice Root Extract
Glycyrrhiza glabra root extract



PRODUCT DESCRIPTION

Licorice Root (*Glycyrrhiza glabra*), Blackberry (*Rubus fruticosus*) Leaf, Rosahip (*Rosa canina*) fruit, Myrtus (*Myrtus communis*) Leaf are dried, ground, extracted with solvent and concentrated by evaporation. Concentrated extracts are prepared in a mixture of glycerin and preservatives and are filtered cleanly after mixing for a while. The filtered extracts are complexed by considering certain ratios.





ETKO ORGANIC CERTIFICATE



COSMOS CERTIFICATE INGREDIENT



GLUTEN FREE



ORGANIC PRODUCTION

BENEFITS

When applied to the skin, it gives a natural glow and shine. In this way, it ensures that the skin has a more lively, youthful and luminous appearance. It helps to hide color imbalances by balancing the skin tone. The illuminating complex tends to lighten minor skin imperfections. It revives tired and dull skin, making the skin look fresher.

MAJOR ACTIVE INGREDIENTS

Glycyrrhizin, L-Ascorbic Acid, 1,8-cineole, Gallic acid.

INCI NAME

Rosa canina fruit extract

Myrtus communis leaf extract

Glycyrrhiza glabra root extract

Rubus fruticosus leaf extract

RECOMMENDED USAGE

It's suitable for use over skin as a cosmetical product.

APPLICATIONS

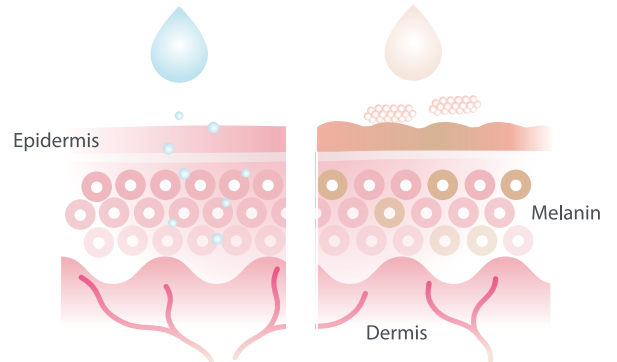
It is used for skin care and skin lightening applications.

EFFICIENCY

The efficacy of Brightening Complex has been proven through in-vitro testing without animal experiments.

TYPE OF PACKING

Plastic packages made of HDPE material.



Recommended Dosage
%0,5-2



TYPES OF PACKING

KEY INGREDIENT



Licorice Root Extract

Glycyrrhiza glabra root extract

It nourishes and strengthens the natural texture of the skin. It is used to improve the appearance of dry or damaged skin by reducing skin rash and restoring elasticity.



Rosahip Fruit Extract

Rosa canina fruit extract

Thanks to its rich content, it provides a brightening effect and antioxidant effect on the skin.



Myrtle Leaf Extract

Myrtus communis leaf extract

It helps to balance and moisturize the skin. It gives shine to the skin. Thanks to its cleansing and firming effect, it contributes to the regeneration of the skin.



Blackberry Leaf Extract

Rubus fruticosus leaf extract

The compounds in it provide an antioxidant effect. It tightens the skin, reduces the appearance of pores and shows collagen effect.

Organic Glycerine

Sodium Benzoate

Potassium Sorbate

Benzyl Alcohol

Dehydroacetic Acid



COSMOS CERTIFIED ORGANIC HAIR CARE COMPLEX



FORMULATION ENRICHED WITH HERBS TO HELP PROTECT HAIR HEALTH

Rosemary Leaf Extract
Rosmarinus officinalis leaf extract



PRODUCT DESCRIPTION

Olive (*Olea europea*) Leaf, Rosemary (*Rosmarinus officinalis*) Leaf, Yarrow (*Achillea millefolium*), Lavender (*Lavender angustifolia*), Sage (*Salvia officinalis*), Thyme (*Thymus vulgaris*), Garlic (*Allium sativum*) are dried, ground, extracted with solvent and concentrated by evaporation. Concentrated extracts are prepared in a mixture of glycerin and preservatives and are filtered cleanly after mixing for a while. The filtered extracts are complexed by considering certain ratios.



ETKO ORGANIC CERTIFICATE



COSMOS CERTIFICATE INGREDIENT



GLUTEN FREE



ORGANIC PRODUCTION

BENEFITS

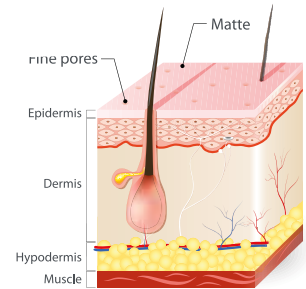
It helps to maintain the moisture balance of the hair, repair the split ends, increase the elasticity of the hair, nourish the scalp and improve the overall appearance of the hair. Protects hair health by promoting hair growth.

MAJOR ACTIVE INGREDIENTS

Oleuropein
Rosmarinic acid
β-pinene
Linalool
1,8-cineole
Carvacrol
Allicin

INCI NAME

Olea europea leaf extract
Rosmarinus officinalis leaf extract
Achillea millefolium extract
Lavanta angustifolia extract
Salvia officinalis extract
Thymus vulgaris extract
Allium sativum bulb extract



RECOMMENDED USAGE

It is suitable for use as a cosmetic product for hair.

APPLICATIONS

It is used in hair applications.

TYPE OF PACKING

Plastic packages made of HDPE material.

Recommended Dosage
%0,5-2



TYPES OF PACKING

KEY INGREDIENT



Rosemary Leaf Extract

Rosmarinus officinalis leaf extract

Thanks to its rich content, it supports the health of the scalp and reduces hair loss. It promotes rapid hair growth.



Sage (Medicinal) Extract

Salvia officinalis extract

It prevents hair loss and hair breakage. It gives volume to the hair by cleaning the scalp and pores.



Lavender

(English Lavender) Extract

Lavanta angustifolia extract

It prevents hair breakage and promotes hair growth. Thanks to the compounds it contains; While preventing hair loss, it helps to relax the scalp by eliminating the factors that cause dandruff. It strengthens the hair, increases its shine and prevents its wear.



Garlic Extract

Allium sativum bulb extract

It strengthens the hair and makes it look shiny. It helps prevent dandruff formation.



Yarrow Extract

Achillea millefolium extract

It will prevent hair loss and make it have stronger hair. It gives shine and soft appearance to the hair.



Olive Leaf Extract

Olea europea leaf extract

It prevents hair breakage and strengthens hair. It gives shine and revitalizes the hair.

Organic Glycerine

Sodium Benzoate

Potassium Sorbate

Sodium Hyaluronate

Benzyl Alcohol

Dehydroacetic Acid



COSMOS CERTIFIED ORGANIC MOISTURISING COMPLEX



**FORMULATION ENRICHED WITH HERBS TO RELAX,
CALM, MOISTURIZE THE SKIN AND REDUCE SENSITIVITY**

Fennel Seed Extract
Foeniculum vulgare seed extract



PRODUCT DESCRIPTION

St. John's Wort (*Hypericum perforatum*), Fennel (*Foeniculum vulgare*) Seeds, German Chamomile (*Chamomilla recutita*), Lavender (*Lavandula angustifolia*) and Laurel (*Laurus nobilis*) Leaves are dried, ground, extracted with solvent and concentrated by evaporation. Concentrated extracts are prepared in a mixture of glycerin and preservatives and are filtered cleanly after mixing for a while. The filtered extracts are complexed by considering certain ratios.



ETKO ORGANIC CERTIFICATE



COSMOS CERTIFICATE INGREDIENT



GLUTEN FREE



ORGANIC PRODUCTION

BENEFITS

Thanks to its rich content, it protects the moisture balance of the skin, prevents moisture loss and keeps the skin soft, supple and healthy by moisturizing it. It is an important part of the skin care routine and when used regularly, it can maintain the moisture balance of the skin and reduce the appearance of dryness, roughness and lines.

MAJOR ACTIVE INGREDIENTS

Hypericin, Trans-anestole, α -bisabolol, Linalool, 1,8-cineole.

INCI NAME

Hypericum perforatum extract
Foeniculum vulgare seed extract
Chamomilla recutita extract
Lavandula angustifolia extract
Laurus nobilis leaf extract

RECOMMENDED USAGE

It's suitable for use over skin as a cosmetic product.

APPLICATIONS

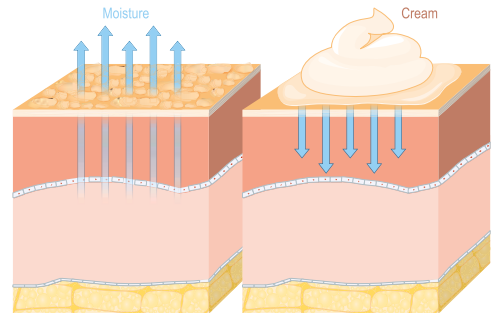
It is used for skin care and skin moisturising applications.

EFFICIENCY

The efficacy of Moisturising Complex has been proven through in-vitro testing without animal experiments.

TYPE OF PACKING

Plastic packages made of HDPE material.



Recommended Dosage
%0,5-2



TYPES OF PACKING

KEY INGREDIENT



Fennel Seed Extract

Foeniculum vulgare seed extract

It helps to preserve moisture in the skin and contributes to the prevention of skin dryness. It has a softening and soothing effect on the skin.



St. John's Wort Extract

Hypericum perforatum extract

It increases the moisture level of the skin and provides a more moist appearance. It nourishes the skin and helps it gain a soft, smooth appearance.



Lavender Extract

Lavanta angustifolia flower extract

Thanks to its rich content, it strengthens the skin barrier. It moisturizes, nourishes, soothes the skin and makes it look brighter.



Laurel Leaf Extract

Laurus nobilis leaf extract

It moisturizes the skin and makes it look brighter, younger and more dynamic.



German Chamomile Extract

Chamomilla recutita extract

It helps reduce skin dryness and gives skin elasticity.

Organic Glycerine

Sodium Benzoate

Potassium Sorbate

Benzyl Alcohol

Dehydroacetic Acid



COSMOS CERTIFIED ORGANIC SOOTHING COMPLEX



**FORMULATION ENRICHED WITH HERBS TO PROVIDE A
CALMING AND MOISTURISING EFFECT ON THE SKIN**

German Chamomile Extract
Chamomilla recutita extract



PRODUCT DESCRIPTION

German Chamomile (*Chamomilla recutita*), Lavender (*Lavender angustifolia*), St. John's Wort (*Hypericum perforatum*), Sage (Medicinal) (*Salvia officinalis*) and Fennel (*Foeniculum vulgare*) Seeds are dried, ground, extracted with solvent and concentrated by evaporation. Concentrated extracts are prepared in a mixture of glycerin and preservatives and are filtered cleanly after mixing for a while. The filtered extracts are complexed by considering certain ratios.





ETKO ORGANIC CERTIFICATE



COSMOS CERTIFICATE INGREDIENT



GLUTEN FREE



ORGANIC PRODUCTION

BENEFITS

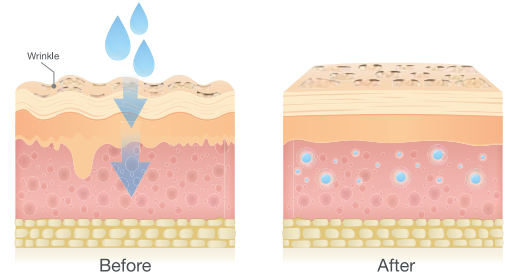
It helps to relax, calm, moisturize the skin and reduce sensitivity. It reduces the redness of the skin, soothes and provides a relaxing effect.

MAJOR ACTIVE INGREDIENTS

α -bisabolol, Linalool, Hypericin, 1,8-cineole, Trans-anestole.

INCI NAME

Chamomilla recutita extract
Lavandula angustifolia extract
Salvia officinalis extract
Hypericum perforatum extract
Foeniculum vulgare seed extract



RECOMMENDED USAGE

It is suitable for use on the skin as a cosmetic product.

APPLICATIONS

It is used for skin care and skin soothing applications.

EFFICIENCY

The efficacy of Soothing Complex has been proven through in-vitro testing without animal experiments.

TYPE OF PACKING

Plastic packages made of HDPE material.

Recommended Dosage
%0,5-2



TYPES OF PACKING

1Kg.

5Kg.

25Kg.

KEY INGREDIENT



German Chamomile Extract

Chamomilla recutita extract

It soothes the skin and has anti-redness properties. It helps reduce skin dryness, moisturizes and gives elasticity.



Lavander Extract

Lavanta angustifolia extract

It relaxes the skin with its soothing effect. It moisturizes the skin, nourishes it and makes it look brighter.



St. John's Wort Extract

Hypericum perforatum extract

It reduces redness on the skin due to various reasons and relaxes the skin with its soothing effect.



Fennel Seed Extract

Foeniculum vulgare seed extract

It helps to preserve moisture in the skin and contributes to the prevention of skin dryness. It has a softening and soothing effect on the skin.



Sage (Medicinal) Extract

Salvia officinalis extract

It tightens the skin and shrinks the pores. It removes redness on the skin surface and provides a more lively appearance.

Organic Glycerine
Sodium Benzoate
Potassium Sorbate
Benzyl Alcohol
Dehydroacetic Acid





Greenext
Sustain the Success

GREEN5 COMPLEX



COMPLEX TO HELP REDUCE THE HAIR LOSS

Black Tea Extract
Camellia sinensis leaf extract



PRODUCT DESCRIPTION

Green Tea (*Camellia sinensis* leaf), Senna Leaf (*Cassia angustifolia* leaf), Black Pepper (*Piper nigrum* seed), Sage (Medicinal) (*Salvia officinalis*), Common Nettle (*Urtica dioica* leaf) are dried, ground, extracted with solvent and concentrated by evaporation. The concentrated extract is prepared in a mixture of butylene glycol and preservatives and the extract is cleanly filtered after stirring for a while.





BENEFITS

Thanks to its rich content, it has the effect of helping to reduce hair loss by nourishing the scalp.

MAJOR ACTIVE INGREDIENTS

Caffeine, Antioxidants, Capsaicin, 1,8-cineole, Quercetin

INCI NAME

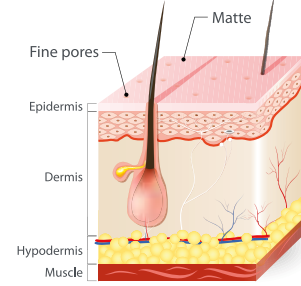
Camellia sinensis leaf extract

Cassia angustifolia leaf extract

Piper nigrum seed extract

Salvia officinalis extract

Urtica dioica leaf extract



RECOMMENDED USAGE

It's suitable for use over hair as a cosmetic product.

APPLICATIONS

It can be used in products that help nourish, regenerate, shine and help against hair loss.

TYPE OF PACKING

Plastic packages made of HDPE material.



TYPES OF PACKING



KEY INGREDIENT



Black Tea Extract

Camellia sinensis leaf extract

Saç köklerinin ve saç derisinin sağlığını
Helps protect the health of hair follicles
and scalp and reduce hair loss.



Senna Extract

Cassia angustifolia leaf extract

Helps eliminate dandruff and make hair look
healthier.



Common Nettle Extract

Urtica dioica leaf extract
Helps repair damaged hair,
maintain the oil balance of the hair,
and gain volume in the hair.



Black Pepper Extract

Piper nigrum seed extract

Helps strengthen hair, grow hair, and
relieve dandruff problem.



Sage (Medicinal) Extract

Salvia officinalis extract

Helps reduce hair loss and make hair
look shiny.

Glycerine
Sodium Benzoate
Potassium Sorbate
Benzyl Alcohol
Dehydroacetic Acid





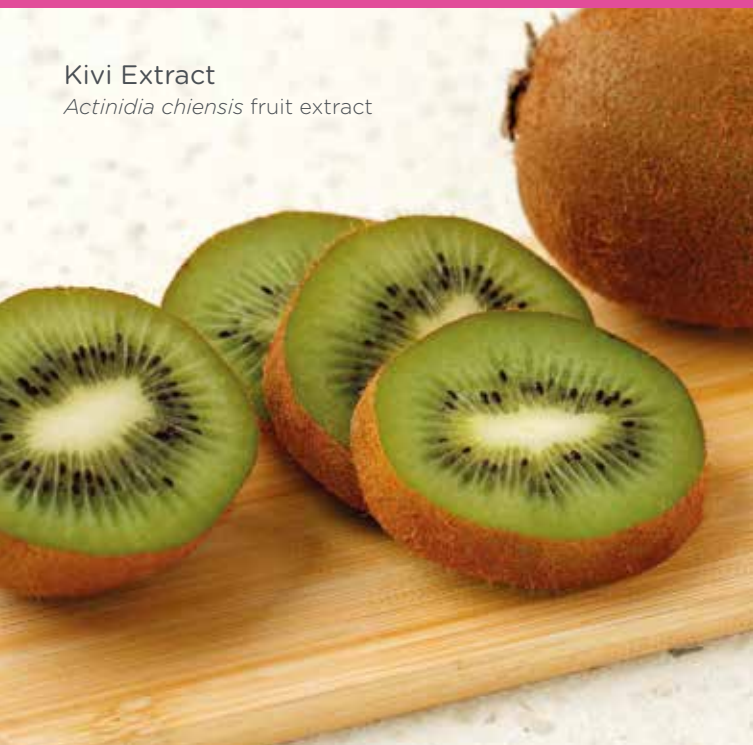
Greenext
Sustain the Success

GREENEXT G17 COMPLEX



COMPLEX FOR USE IN MAKE-UP REMOVER WATER

Kivi Extract
Actinidia chinensis fruit extract



PRODUCT DESCRIPTION

Kiwi Fruit (*Actinidia deliciosa* fruit), Green Tea (*Camellia sinensis* leaf), Grape Seed (*Vitis vinifera* seed) are dried, ground, extracted with solvent and concentrated by evaporation. The concentrated extract is prepared in a mixture of glycerin and preservative, and the extract is cleanly filtered after stirring for a while.





BENEFITS

Thanks to its rich content, it helps the skin to feel soft and refreshed. It also strengthens the skin barrier, tightens pores and soothes inflammation.

MAJOR ACTIVE INGREDIENTS

Caffeic acid, Chlorogenic acid, Resveratrol, Proanthocyanin, Epicatechin

INCI NAME

Actinidia chinensis fruit extract

Camellia sinensis leaf extract

Vitis vinifera seed extract

RECOMMENDED USAGE

It's suitable for use over skin as a cosmetic product.

APPLICATIONS

It can be used in natural facial cleansing products. It moisturises the skin and gently removes make-up, dirt and oil.

TYPE OF PACKING

Plastic packages made of HDPE material.



TYPES OF PACKING

KEY INGREDIENT



Kiwi Extract

Actinidia chinensis fruit extract

Thanks to the vitamin C it contains, it supports skin health, balances skin tone and helps the skin stay young and healthy. By increasing collagen production, it helps increase skin elasticity and firmness.



Green Tea Extract

Camellia sinensis leaf extract

Thanks to the antioxidants it contains, it can reduce cellular damage by fighting free radicals. It has anti-inflammatory properties. It refreshes the skin thanks to its soothing properties.



Grape Seed Extract

Vitis vinifera seed extract

It helps increase collagen production, which helps the skin become more elastic and firm. It can strengthen the skin barrier and reduce skin moisture loss, helping the skin look moist and healthy.

Glycerine

Sodium Benzoate

Potassium Sorbate

Benzyl Alcohol

Dehydroacetic Acid

Zinc PCA

Niacinamide





Greenext
Sustain the Success

GREENEXT G25 COMPLEX



COMPLEX USED IN UN-WANTED HAIR REMOVAL PRODUCTS

Orange Peel Extract
Citrus sinensis peel extract



PRODUCT DESCRIPTION

Sweet Orange Peel (*Citrus sinensis* peel), Common Onion (*Allium cepa* bulb), Walnut Peel (*Juglans regia* peel), Lemon Peel (*Citrus limon* peel) are dried, ground, extracted with solvent and concentrated by evaporation. The concentrated extract is prepared in a mixture of glycerin and preservatives and the extract is cleanly filtered after stirring for a while.





GLUTEN FREE



BENEFITS

It has the effect of targeting the hair follicles in the body and helping to reduce or control un-wanted hair growth.

MAJOR ACTIVE INGREDIENTS

Allicin, Limonene, Antioxidans

INCI NAME

- Allium cepa* bulb extract
- Citrus sinensis* peel extract
- Juglans regia* peel extract
- Citrus limon* peel extract

RECOMMENDED USAGE

It's suitable for use over skin as a cosmetic product.

APPLICATIONS

Can be used in un-wanted hair removal products.

TYPE OF PACKING

Plastic packages made of HDPE material.



TYPES OF PACKING

KEY INGREDIENT



Orange Peel Extract
Citrus sinensis peel extract
 Moisturizes the skin and helps weaken it by penetrating the hair follicles.



Onion Extract
Allium cepa bulb extract
 It has a helpful effect on weakening hair follicles and prolonging the period of hair regrowth.



Lemon Peel Extract
Citrus limon peel extract
 Moisturizes the skin and helps reduce hair growth and density.



Walnut Shell Extract
Juglans regia peel extract
 Nourishes the skin and helps weaken the hair follicles.

- Glycerine
- Sodium Benzoate
- Potassium Sorbate
- Benzyl Alcohol
- Dehydroacetic Acid





Greenext
Sustain the Success

GREENEXT G35 COMPLEX



FORMULATION TO HELP NOURISHES SKIN AND HAIR

Pot Marigold Flower Extract
Calendula officinalis flower extract



PRODUCT DESCRIPTION

Pot Marigold (*Calendula officinalis* flower), German Chamomile (*Chamomilla recutita*), Rosemary Leaf (*Rosmarinus officinalis* leaf), Everlasting (Immortelle) (*Helichrysum italicum* flower), Field Horsetail Leaf (*Equisetum arvense* leaf) are dried, ground, extracted with solvent and concentrated by evaporation. The concentrated extract is prepared in a mixture of glycerin and preservatives and the extract is cleanly filtered after stirring for a while.





GLUTEN FREE



BENEFITS

Thanks to its rich content, it helps moisturise the hair and skin.

MAJOR ACTIVE INGREDIENTS

Lutein, Bisabolol, Rosmarinic acid, Lauric acid, Isoquercetin

INCI NAME

Calendula officinalis flower extract

Chamomilla recutita extract

Rosmarinus officinalis leaf extract

Helichrysum italicum extract

Equisetum arvense leaf extract

RECOMMENDED USAGE

It's suitable for use over skin and hair as a cosmetic product.

APPLICATIONS

It's suitable for use in cosmetic products that help nourish and moisturise hair and skin.

TYPE OF PACKING

Plastic packages made of HDPE material.

Recommended
Dosage

%1-3



1Kg.

5Kg.

25Kg.

TYPES OF PACKING

KEY INGREDIENT



Pot Marigold Flower Extract

Calendula officinalis leaf extract

Soothes and moisturizes the skin. It is effective against scalp problems. It strengthens, moisturizes the hair and helps increase its shine.



Rosemary Leaf Extract

Rosmarinus officinalis leaf extract

Helps soothe the skin and add shine to the hair.



German Chamomile Ekstrakti

Chamomilla recutita extract

Helps moisturize the skin and add shine to the hair.



Horsetail Leaf Extract

Equisetum arvense leaf extract

Skin and hair; It has a moisturizing and nourishing effect.



Everlasting (immortelle) Flower Extract

Helichrysum italicum extract

Helps moisturize the skin and hair.

Glycerine

Sodium Benzoate

Potassium Sorbate

Benzyl Alcohol

Dehydroacetic Acid





Greenext
Sustain the Success

GREENEXT G36 COMPLEX



FORMULATION TO HELP NOURISHES SKIN

Blackberry Leaf Extract
Rubus fruticosus leaf extract



PRODUCT DESCRIPTION

Blackberry Leaf (*Rubus fruticosus* leaf), White Willow Peel (*Salix alba* bark), Laurel Leaf (*Laurus nobilis* leaf) are dried, ground, extracted with solvent and concentrated by evaporation. The concentrated extract is prepared in a mixture of glycerin and preservatives and the extract is cleanly filtered after stirring for a while.





BENEFITS

Thanks to its rich content, it helps to shed dead skin cells, making the skin look brighter and smoother. Helps to balance skin oil production and skin tone. It is rich in antioxidant content and has antimicrobial properties. In this way, it helps prevent acne and blackheads on the skin. It is also effective in removing blemishes caused by acne. It brightens, illuminates and brightens the skin.

MAJOR ACTIVE INGREDIENTS

Salicin, Anthocyanins, 1,8-cineole.

INCI NAME

Salix alba bark extract

Rubus fruticosus leaf extract

Laurus nobilis leaf extract

RECOMMENDED USAGE

It's suitable for use over skin as a cosmetic product.

APPLICATIONS

It's suitable for use in cosmetic products that help nourish, moisturise, balance skin tone and revitalise the skin.

TYPE OF PACKING

Plastic packages made of HDPE material.

Recommended
Dosage

%1-3



TYPES OF PACKING

1Kg.

5Kg.

25Kg.



Blackberry Leaf Extract

Rubus fruticosus leaf extract
It improves skin health thanks to its antioxidants. Helps moisturise the skin.



Laurel Leaf Extract

Laurus nobilis leaf extract
It helps the skin to regenerate the cells in the skin and helps the skin to gain a young appearance.



White Willow Peel Extract

Salix alba bark extract
Smoothes the skin surface. It has the effect of helping to tighten the skin, reduce pores and reduce the appearance of wrinkles.

Glycerine

Sodium Benzoate

Potassium Sorbate

Benzyl Alcohol

Dehydroacetic Acid





Greenext
Sustain the Success

GREENEXT G64 COMPLEX



COMPLEX FOR UNDER-EYE CARE AND REDUCTION OF UNDER-EYE BRUISING

Peppermint Extract
Mentha piperita leaf extract



PRODUCT DESCRIPTION

Peppermint Leaf (*Mentha piperita* leaf), Purple Patato (*Dioscorea alata*), Rosahip Fruit Extract (*Rosa canina* fruit) are dried, ground, extracted with solvent and concentrated by evaporation. The concentrated extract is prepared in a mixture of glycerin and preservatives and the extract is cleanly filtered after stirring for a while.





BENEFITS

The complex nourishes, refreshes and brightens the skin and has anti-inflammatory properties. It helps reduce dark circles under the eyes and can also make the skin look healthy and fresh.

MAJOR ACTIVE INGREDIENTS

Anthocyanidin, Menthol, Ascorbic acid.

INCI NAME

Dioscorea alata extract

Mentha piperita leaf extract

Rosa canina fruit extract

RECOMMENDED USAGE

It's suitable for use over skin as a cosmetic product.

APPLICATIONS

It can be used in cosmetic products designed to reduce bags under-eye, moisturise and help reduce the appearance of dark circles.

TYPE OF PACKING

Plastic packages made of HDPE material.



TYPES OF PACKING



TEMEL BİLEŞENLER



Peppermint Extract

Mentha piperita leaf extract

It cools the skin and helps relieve under-eye bruises and swelling.



Purple Potato Extract

Dioscorea alata extract

Thanks to its anti-inflammatory properties, it helps reduce swelling and inflammation under the eyes.



Rosahip Fruit Extract

Rosa canina fruit extract

Rich in antioxidants. Thanks to these compounds, it can protect skin cells by fighting free radicals and helps reduce the formation of under-eye dark circles and swelling.

Glycerine

Sodium Benzoate

Potassium Sorbate

Benzyl Alcohol

Dehydroacetic Acid

Caffeine

Niacinamide





Greenext
Sustain the Success

GREENEXT G70 COMPLEX



COMPLEX TO HELP REDUCE THE APPEARANCE OF STRETCH MARKS

Wheat Germ Extract
Triticum vulgare extract



PRODUCT DESCRIPTION

Common Wheat (*Triticum spp.*), Avocado Fruit (*Persea americana*), Almond (*Prunus amygdalus*), Grape Seed (*Vitis vinifera* seed) are dried, ground, extracted with solvent and concentrated by evaporation. The concentrated extract is prepared in a mixture of glycerin and preservatives and the extract is cleanly filtered after stirring for a while.





BENEFITS

Thanks to its rich content, it nourishes, refreshes, moisturises and helps to reduce the appearance of stretch marks.

MAJOR ACTIVE INGREDIENTS

Antioxidants, Oleic acid, Resveratrol, Proanthocyanidin

INCI NAME

Triticum vulgare extract

Persea americana extract

Prunus dulcis extract

Vitis vinifera seed extract

RECOMMENDED USAGE

It's suitable for use over skin as a cosmetic product.

APPLICATIONS

It can be used in products that help to nourish and refresh the skin, reduce skin itching, protect the skin against damage, tighten the skin and heal stretch marks.

TYPE OF PACKING

Plastic packages made of HDPE material.



TYPES OF PACKING

TEMEL BİLEŞENLER



Wheat Germ Extract

Triticum vulgare extract

It has the feature of moisturizing the skin. In this way, it prevents the skin from cracking. Thanks to the antioxidants it contains, it can protect skin cells by fighting free radicals and helps prevent the formation of stretch marks.



Avocado Extract

Persea americana extract

By deeply moisturizing the skin, it prevents the skin from drying out and helps prevent the formation of cracks.



Almond Extract

Prunus amygdalus extract

Moisturizes the skin and helps prevent the formation of stretch marks. It improves skin tone and makes existing cracks less visible, and can reduce their color. It supports the regeneration of skin cells.



Grape Seed Extract

Vitis vinifera seed extract

It moisturizes the skin, prevents it from drying out and helps prevent the formation of cracks.

Glycerine

Sodium Benzoate

Potassium Sorbate

Benzyl Alcohol

Dehydroacetic Acid

Hexapeptide-3

4D Hyaluronic Acid





Greenext
Sustain the Success

COLLAGEN COMPLEX



HERBAL COMPLEX TO SUPPORT COLLAGEN PRODUCTION

Blueberries Fruit Extract
Vaccinium myrtillus extract



PRODUCT DESCRIPTION

Blueberry (*Vaccinium myrtillus*), Blackberry Leaf (*Rubus fruticosus* leaf), Wild Strawberry Fruit (*Arbutus unedo* fruit), Sweet Orange Peel (*Citrus sinensis* peel) dried, ground, extracted with solvent and concentrated by evaporation. The concentrated extract is prepared in a mixture of glycerin and preservatives and the extract is cleanly filtered after stirring for a while.





GLUTEN FREE



BENEFITS

Nourishes the skin, supports collagen production. It helps to minimise the formation of wrinkles on the skin and the visibility of wrinkles.

MAJOR ACTIVE INGREDIENTS

Gallic acid, Anthocyanidins, Arbutin, Cineol

INCI NAME

Rubus fruticosus leaf extract

Vaccinium myrtillus extract

Arbutus unedo fruit extract

Citrus sinensis peel extract

RECOMMENDED USAGE

Suitable for use on the skin as a cosmetic product.

APPLICATIONS

It can be used in products that help to moisturise, refresh, nourish the skin, support collagen production in the skin, and reduce the appearance of wrinkles.



TYPE OF PACKING

Plastic packages made of HDPE material.



TYPES OF PACKING

1Kg.

5Kg.

25Kg.

KEY INGREDIENT



Blueberries Fruit Extract

Vaccinium myrtillus extract

Moreover, with its anti-aging effect, it reduces the rate of formation of wrinkles and reduces the visibility of already existing wrinkles to a minimum.



Wild Strawberry Fruit Extract

Arbutus unedo fruit extract

It reduces the rate of wrinkle formation and minimizes the visibility of existing wrinkles.



Sweet Orange Peel Extract

Citrus sinensis peel extract

It helps the skin to become firm and elastic by improving collagen production. It also provides better absorption of collagen.



Blackberry Leaf Extract

Rubus fruticosus leaf extract

It also keeps the skin healthy and strong thanks to its vitamin C content, helps to reduce dry skin formation by supporting collagen production.

Glycerine

Sodium Benzoate

Potassium Sorbate

Benzyl Alcohol

Dehydroacetic Acid





Greenext
Sustain the Success

HERBA PET COMPLEX



HERBAL COMPLEX THAT PROVIDES VITALITY AND SHINE TO THE HAIRS

Aleo Vera Extract
Aloe barbadensis leaf extract



PRODUCT DESCRIPTION

Aloe Vera (*Aloe barbadensis* leaf), Silver Birch (*Betula alba* leaf), Sage (Medicinal) (*Salvia officinalis*), Rosemary Leaf (*Rosmarinus officinalis* leaf), German Chamomile (*Chamomilla recutita*), Licorice Root (*Glycyrrhiza glabra* root), Green Tea (*Camellia sinensis* leaf) dried, ground, extracted with solvent and concentrated by evaporation. The concentrated extract is prepared in a mixture of glycerin and preservatives and the extract is cleanly filtered after stirring for a while.





GLUTEN FREE



BENEFITS

It supports the prevention of drying and irritation on the skin. It can be used in products that help pet hair care.

MAJOR ACTIVE INGREDIENTS

Betulinic acid, Rosmarinic acid, Bisabolol, Glycyrrhizin, Quercetin

INCI NAME

Betula alba leaf extract
Salvia officinalis extract
Rosmarinus officinalis leaf extract
Chamomilla recutita extract
Glycyrrhiza glabra root extract
Camellia sinensis leaf extract
Aloe barbadensis leaf extract

Recommended
Dosage
%1-3

RECOMMENDED USAGE

Suitable for use in pets as a cosmetic product.

APPLICATIONS

It helps the hair of pets to gain liveliness and shine.

TYPE OF PACKING

Plastic packages made of HDPE material.



1Kg.

5Kg.

25Kg.

TYPES OF PACKING

KEY INGREDIENT



Aleo Vera Extract

Aloe barbadensis leaf extract
It has a soothing, moisturising and healing effect on the skin.



German Chamomile Extract

Chamomilla recutita extract
It soothes, relaxes and moisturises the skin. Helps to soften the hairs.



Silver Birch Extract

Betula alba leaf extract
It has the effect of helping to clean the skin, soothe and soften the hair of pets. Supports to alleviate irritation formation.



Rosemary Leaf Extract

Rosmarinus officinalis leaf extract
It has the effect of helping to clean the skin and hair of pets and increase their brightness.



Green Tea Extract

Camellia sinensis leaf extract
It has the effect of helping to clean the skin of pets, relaxing and softening their hair.



Licorice Root Extract

Glycyrrhiza glabra root extract
Thanks to its anti-inflammatory properties, it helps to relieve itching and irritation.



Sage (Medicinal) Extract

Salvia officinalis extract
Thanks to its antimicrobial properties, it has the effect of helping to relieve skin itching and calming the skin

Glycerine

Sodium Benzoate

Potassium Sorbate

Benzyl Alcohol

Dehydroacetic Acid





Greenext
Sustain the Success

MCU COMPLEX



HERBAL COMPLEX THAT REVITALISES THE HAIR, INCREASES ITS SHINE AND MAKES BRUSHING EASIER

Common Mallow Extract
Malva sylvestris leaf extract



PRODUCT DESCRIPTION

Common Mallow (*Malva sylvestris* leaf), German Chamomile (*Chamomilla recutita*), Common Nettle (*Urtica dioica*) dried, ground, extracted with solvent and concentrated by evaporation. The concentrated extract is prepared in a mixture of glycerin and preservatives and the extract is cleanly filtered after stirring for a while.





GLUTEN FREE



BENEFITS

It helps maintain the moisture balance of the hair, repair split ends, increase the elasticity of the hair, nourish the scalp and improve the general appearance of the hair. It protects hair health by promoting hair growth.

MAJOR ACTIVE INGREDIENTS

Bisabolol, Anthocyanins, Formic acid

INCI NAME

Malva sylvestris flower extract

Chamomilla recutita extract

Urtica dioica extract

RECOMMENDED USAGE

Suitable for use on hair as a cosmetic product.

APPLICATIONS

It can be used in products that help nourish, shine, moisturise and make hair more easier to comb.

TYPE OF PACKING

Plastic packages made of HDPE material.



TYPES OF PACKING



KEY INGREDIENT



Common Mallow Extract
Malva sylvestris leaf extract
Strengthens hair roots and hair. It helps the hair to shine.



German Chamomile Extract
Chamomilla recutita extract
It has a moisturising and shining effect on the hair.



Common Nettle Extract
Urtica dioica leaf extract
It helps to strengthen and thicken the hair. It nourishes and strengthens the hair follicles and also helps to protect the oil balance of the hair.

Glycerine

Sodium Benzoate

Potassium Sorbate

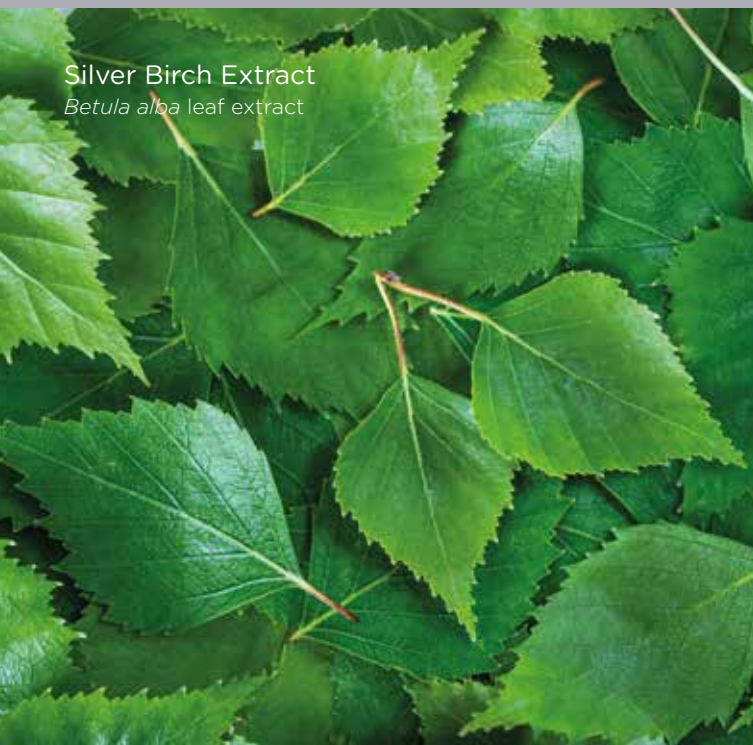
Biotin

Hyaluronic acid





ANTI-CELLULITE HERBAL COMPLEX PRODUCT DESCRIPTION



Silver Birch Extract
Betula alba leaf extract

PRODUCT DESCRIPTION

Silver Birch (*Betula alba* leaf), Rosemary (*Rosmarinus officinalis* leaf) Leaf, Sweet And Chili Pepper (*Capsicum annum*), Horse Chestnut (*Aesculus hippocastanum*) dried, ground, extracted with solvent and concentrated by evaporation. The concentrated extract is prepared in a mixture of glycerin and preservatives and the extract is cleanly filtered after stirring for a while.





GLUTEN FREE



BENEFITS

It can be used in products that prevent the formation of cellulite and help reduce the appearance of existing cellulite.

MAJOR ACTIVE INGREDIENTS

Betulinic acid, Rosmarinic acid, Capsaicin, Aescin

INCI NAME

Betula alba leaf extract
Rosmarinus officinalis leaf extract
Capsicum annuum extract
Aesculus hippocastanum extract
Rosmarinus officinalis
Origanum onites

RECOMMENDED USAGE

Suitable for use on skin as a cosmetic product.

APPLICATIONS

It can be used in products that prevent cellulite and help reduce the appearance of cellulite.

TYPE OF PACKING

Plastic packages made of HDPE material.

Recommended
Dosage
%1-3



TYPES OF PACKING

KEY INGREDIENT



Silver Birch Extract

Betula alba leaf extract

In addition, it has an effect to tighten the skin texture and reduce the appearance of cellulite.



Sweet And Chili Pepper Extract

Capsicum annuum extract

Thanks to its ingredients, it helps to accelerate fat burning and reduce cellulite formation.



Turkish Oregano Essential Oil

Origanum onites

It helps to reduce the appearance of cellulite by accelerating blood circulation on the skin.



Horse Chestnut Extract

Aesculus hippocastanum extract

It helps to lose the fat layer under the skin and tighten the skin.



Rosemary Leaf Extract

Rosmarinus officinalis leaf extract

It has an effect to reduce the appearance of cellulite.



Rosemary Leaf Essential Oil

Rosmarinus officinalis

It has an effect to reduce the appearance of cellulite on the skin.

Glycerine, Menthol, Caffeine, Sodyum Benzoate, Potasyum Sorbate



Licorice (*Glycyrrhiza glabra*) Root Extract journey to Brightening Complex

Licorice is a plant that has been used for medicinal and cosmetic purposes in different cultures throughout history. It has been considered a valuable plant in skin care throughout history and is preferred by many individuals today. It is believed that the ancient Egyptians used licorice root as a preservative in the mummification process.

Over the years, people have developed formulas using the fruits of the Rosahip plant to make their skin brighter and more radiant. The leaves of the myrtle plant, which has gained a reputation for providing vitality and freshness to the skin, also have an important place.

Finally, extracts from the leaves of the Blackberry plant are known for their ability to even out skin tone while helping to revitalize the skin. The history of these plants shows that people have been striving for centuries to discover the beauty treasures of nature.

We present to you the Greenext Brightening Complex, which we produce by making use of the powerful compounds in the content of licorice root and other plants, which have many benefits such as stain removal, moisturizing the skin and helping skin lightening.

Rosahip Fruit Extract
Rosa canina fruit extract



ORGANIC CREAM FORMULA SAMPLE

INCI NAME	%
Aqua	40-50
<i>Olea europaea</i> leaf hydrosol	20-35
<i>Helianthus annuus</i> seed oil	5-10
<i>Olea europaea</i> fruit oil	3-6
Glyceryl stearate, Cetearyl Alcohol, Stearic acid, Sodium Lauroyl Glutamate	2-6
Glyceryl Stearate Se	1-3
Cetearyl Alcohol	3-6
Brightening complex	0.5-2
<i>Lavandula angustifolia</i> oil	0.1-0.5
Benzyl alcohol, Dehydroacetic acid, aqua	0.5-1
Potassium Sorbate	0.1-0.3
Sodium Benzoate	0.1-0.3
Citric Acid	0.1-0.2

Fennel (*Foeniculum vulgare*) Seed Extract journey to Moisturising Complex

The valuable Fennel plant, which has been popularly used by various civilizations from past to present, has been used to moisturize, soothe and soften the skin. In the Middle Ages, it was thought to provide relaxation and softening of the skin by adding it to bath waters.

In addition, Fennel, which is believed to be a magical herb, is also known as a gift from Demeter, the goddess of fertility. Lavender is considered to be the chosen plant of Aphrodite, the goddess of love and beauty in mythology.



Lavander Extract
Lavanta angustifolia flower extract

It is believed that lavender extracts reflect the energy of love and beauty to the skin, while moisturizing and nourishing the skin.

German chamomile, which is known to calm the skin and relieve irritations, has an important place.

We present to you the Greenext Moisturising Complex, which we produce by making use of fennel and other plants, which are considered a valuable component in the skin care industry due to such benefits.

ORGANIC CREAM FORMULA SAMPLE

INCI NAME	%
Aqua	40-50
<i>Olea europaea</i> leaf hydrosol	20-35
<i>Helianthus annuus</i> seed oil	5-10
<i>Olea europaea</i> fruit oil	3-6
Glyceryl stearate, Cetearyl Alcohol, Stearic acid, Sodium Lauroyl Glutamate	2-6
Glyceryl Stearate Se	1-3
Cetearyl Alcohol	3-6
Moisturising complex	0.5-2
<i>Lavandula angustifolia</i> oil	0.1-0.5
Benzyl alcohol, Dehydroacetic acid, aqua	0.5-1
Potassium Sorbate	0.1-0.3
Sodium Benzoate	0.1-0.3
Citric Acid	0.1-0.2



Everlasting (immortelle) (*Helichrysum italicum*) Extract journey to Anti-Aging Complex

Civilizations throughout history have dedicated their efforts to unraveling the mysteries of nature, particularly in the pursuit of health and beauty. The Mediterranean region, in particular, stands as a treasure trove in this regard. Among the various plants celebrated for their beneficial properties, the Everlasting (immortelle) has held a prominent place. Its leaves and flowers have been utilized for centuries to rejuvenate and invigorate the skin, earning it a reputation for promoting well-being. Despite its varied names across civilizations, the Everlasting (immortelle) symbolizes immortality through its enduring appearance, resembling a radiant sun and glistening gold. Its remarkable qualities, which do not diminish over time, offer numerous advantages. In the realm of skincare, extracts derived from Juniper berries, renowned for their antioxidant content, are incorporated into products that combat the visible signs of aging. Olive leaf extracts, on the other hand, not only moisturize the skin but also aid in preserving its elasticity, effectively reducing the effects of aging. Turkish oregano, believed to have been bestowed upon the world by the goddess Aphrodite, possesses potent anti-inflammatory and antioxidant properties, ensuring the skin remains youthful and healthy. We proudly present the Greenext Anti-Aging Complex, a product that harnesses the diverse benefits of these remarkable plants, meticulously crafted to deliver optimal results.

Everlasting (immortelle) Extract
Helichrysum italicum extract

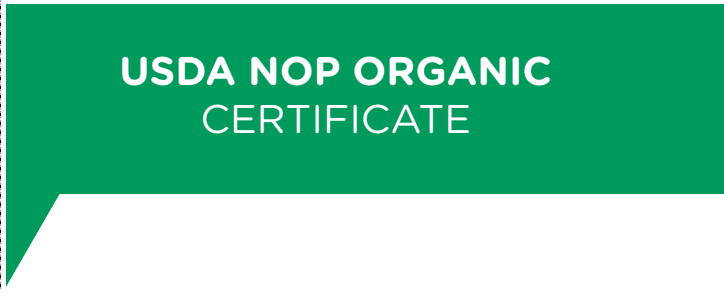
ORGANIC CREAM FORMULA SAMPLE

INCI NAME	%
Aqua	40-50
<i>Olea europaea</i> leaf hydrosol	20-35
<i>Helianthus annuus</i> seed oil	5-10
<i>Olea europaea</i> fruit oil	3-6
Glyceryl stearate, Cetearyl Alcohol, Stearic acid, Sodium Lauroyl Glutamate	2-6
Glyceryl Stearate Se	1-3
Cetearyl Alcohol	3-6
Anti-Aging complex	0.5-2
<i>Lavandula angustifolia</i> oil	0.1-0.5
Benzyl alcohol, Dehydroacetic acid, aqua	0.5-1
Potassium Sorbate	0.1-0.3
Sodium Benzoate	0.1-0.3
Citric Acid	0.1-0.2



CERTIFICATES AND ACCREDITATIONS

The highest benefit that can be obtained from a plant is in its extract form. In order to obtain this form, expert teams must use proven production methods and technologies. The **Greenext** team aims for success in every link of the Chain of Success and has received all the necessary certifications and accreditations to register this success.





Greenext uses the power of innovation and scientific notion to improve itself and its stakeholders. It does not focus on the main, analyzes trends and acts proactively about the future. It works on different technologies and transforms them into benefits with its expertise.

PLANT EXTRACTS





GERMAN CHAMOMILE EXTRACT *Chamomilla recutita*

Active Ingredients	: α -bisabolol
Extract Form	: Liquid
Packaging	: 1 kg, 5 kg, 25 kg; Labeled HDPE packaging
Cosmetics	: Skin care and soothing effect
Food Supplements	: Antioxidant supplement, liquid extract supplements
Beverage Flavoring	: Tea, chamomile juice and oil
Pet Health, Food, Cosmetics	: Cat/Dog food
Herbal Medicine	: Syrup, vitamin supplements
Cleaning Product	: Air fresheners
Type	: Organic Certified, Conventional

German Chamomile is a plant rich in flavonoids and α -bisabolol, commonly used for its soothing and skin care properties.



SAGE (MEDICINAL) EXTRACT *Salvia officinalis*

Active Ingredients	: 1,8-cineol, Camphor, α -pinene
Extract Form	: Powder and liquid
Packaging	: 1 kg, 5 kg, 25 kg; Labeled HDPE packaging
Cosmetics	: Skincare, anti-aging, fungus cream, wound healing, acne and pimple cream
Food Supplements	: Pastilles, honey, spices, flavorings (pickles, cheese, etc.), antioxidants
Beverage Flavoring	: Tea, vinegar
Pet Health, Food, Cosmetics	: Livestock feed, parrot feed, dog shampoo
Herbal Medicine	: Essential oils, phytotherapeutic capsules, natural insect repellent
Cleaning Product	: Air freshener, mouthwash, soap, toothpaste
Type	: Organic Certified, Conventional

Sage (Medicinal) is an important essential oil plant. The amount of essential oil in the plant is between 2-4% and is found in the stem, branches and leaves. The main component of the essential oil is 1,8-cineole and its ratio in the oil varies between 40-60%. Sage is also rich in phenolics and terpenoids.



ROSEMARY LEAF EXTRACT *Rosmarinus officinalis* leaf

Active Ingredients	: 1,8-cineole, Camphor, α -pinene, Borneol
Extract Form	: Powder and liquid
Packaging	: 1 kg, 5 kg, 25 kg; Labeled HDPE packaging
Cosmetics	: Skin and hair care, anti-aging, spot treatment, firming, antiseptic, anti-acne, dermatitis and eczema, deodorant, tonic
Food Supplements	: Spices, liquid extract supplements, pastes, vital oils, pickles
Beverage Flavoring	: Tea, organic juice, vinegar
Pet Health, Food, Cosmetics	: Bird litter, parrot food, dog/cat food, shampoo
Herbal Medicine	: Dietary supplement, tablet/capsule supplement
Cleaning Product	: Rosemary spirit, cologne, shampoo, soap, lotion
Type	: Organic Certified, Conventional

Rosemary is one of the important essential oil plants. Its essential oil is found in the leaves and its amount in the plant varies between 1 and 3%. The main component is 1,8-cineole and its ratio in the oil is 50% and above.



FIELD HORSETAIL LEAF EXTRACT *Equisetum arvense* leaf

Active Ingredients	: Silisilic Acid
Extract Form	: Liquid
Packaging	: 1 kg, 5 kg, 25 kg; Labeled HDPE packaging
Cosmetics	: Strengthening hair follicles
Food Supplements	: Spice, food encapsulate
Beverage Flavoring	: Tea
Pet Health, Food, Cosmetics	: Cat/Dog food
Herbal Medicine	: Vitamin supplements
Cleaning Product	: Air fresheners
Type	: Organic Certified, Conventional

Field Horsetail is beneficial for strengthening the hair by nourishing the hair roots due to its high content of silica.



THYME EXTRACT *Thymus vulgaris*

Active Ingredients	: Carvacrol, thymol, rosmarinic acid, caffeic acid
Extract Form	: Powder and liquid
Packaging	: 1 kg, 5 kg, 25 kg; Labeled HDPE packaging
Cosmetics	: Skincare, perfumery, creams
Food Supplements	: Spices, supplements, honey, sauces
Beverage Flavoring	: Tea, thyme juice, oil
Pet Health, Food, Cosmetics	: Animal feed, cat/dog food
Herbal Medicine	: Syrup, vitamin supplements, diuretics, fungicides, mouthwash
Cleaning Product	: Bath products, air fresheners
Type	: Organic Certified, Conventional

Thyme has a characteristic odor thanks to the essential oils it contains. The main components of the essential oil are thymol and carvacrol. Thyme also contains α -terpinene, apigenin, diosmetin, luteolin, rosmarinic acid, caffeic acid, cinnamic acid and chlorogenic acid



TURKISH OREGANO EXTRACT *Origanum onites*

Active Ingredients	: Carvacrol, Thymol, Rosmarinic acid, Caffeic acid, Naringenin, Chlorogenic acid
Extract Form	: Powder and liquid
Packaging	: 1 kg, 5 kg, 25 kg; Labeled HDPE packaging
Cosmetics	: Serum, face/body creams, body oil, skin care, deodorant
Food Supplements	: Spices, honey, butter, oil, sauces, cheese, dietary supplements
Beverage Flavoring	: Juice, tea, oil, alcoholic/non-alcoholic beverage
Pet Health, Food, Cosmetics	: Poultry, rodents, bird, fish, cat and dog food
Herbal Medicine	: Serum, syrup, supplements, homeopathic treatment
Cleaning Product	: Cleaning vinegar, air freshener, soap, toothpaste, cleaning water, wet wipes
Type	: Organic Certified, Conventional

Turkish Oregano has a characteristic odor thanks to the essential oils it contains. The amount of essential oil it contains is around 3% on average. The main component of the essential oil is mostly carvacrol and its ratio is 70% and above. There are also chemotypes containing thymol.



LAVENDER EXTRACT *Lavandula x intermedia*

Active Ingredients	: Linalyl acetate, Linalool, Camphor, 1,8-cineole
Extract Form	: Powder and liquid
Packaging	: 1 kg, 5 kg, 25 kg; Labeled HDPE packaging
Cosmetics	: Perfumery, skincare, hair care, tonic, fragrance, acne and acne care, antibacterial products
Food Supplements	: Sauce, honey, flavor, extract capsules
Beverage Flavoring	: Tea, vinegar, soda
Pet Health, Food, Cosmetics	: Livestock feed, cat/dog food, shampoo, odor remover, dog urine pads, cat litter, wood chips for rodents, hair collection roll
Herbal Medicine	: Pest repellent, nasal strips, essential oils, ointment, aroma therapy
Cleaning Product	: Soap, detergent, surface cleaners, air fresheners, shampoo, shower gel, fabric softener, air conditioning cleaner, wet wipes, toothpaste, tincture, cologne
Type	: Organic Certified, Conventional

Lavender plant contains plenty of essential oil molecules. The amount of essential oil varies between 4-6%. The main components of the essential oil are linalool and linalyl acetate. In addition, the lavender extract also contains camphor, borneol and caryophyllene molecules.



GARLIC EXTRACT *Allium sativum* bulb

Active Ingredients	: Allicin
Extract Form	: Liquid
Packaging	: 1 kg, 5 kg, 25 kg; Labeled HDPE packaging
Cosmetics	: Antioxidant effect
Food Supplements	: Spice, flavorant and antioxidant
Beverage Flavoring	: Tea
Pet Health, Food, Cosmetics	: Cat/Dog encapsulate
Herbal Medicine	: Vitamin supplements
Cleaning Product	: -
Type	: Organic Certified, Conventional

Garlic strengthens the hair and maintains the health of the scalp due to its high antioxidant content and Allicin component.



LICORICE ROOT EXTRACT *Glycyrrhiza glabra* root

Active Ingredients	: Glycyrrhizin
Extract Form	: Liquid
Packaging	: 1 kg, 5 kg, 25 kg; Labeled HDPE packaging
Cosmetics	: Cream, gel, whitening products
Food Supplements	: Syrup, vitamin supplements
Beverage Flavoring	: Tea, juice
Type	: Organic Certified, Conventional

Due to its anti-inflammatory properties and the component Glycyrrhizin, Licorice Root reduces inflammation in the body and eliminates skin blemishes.



ELDERBERRY EXTRACT *Sambucus nigra*

Active Ingredients	: Cyanidin-3-O-glucoside, Cyanidin-3-O-sambubioside, Cyanidin-3-O-sambubioside-5-O-glucoside, Cyanidin-3,5-O-diglucoside, Cyanidin-3-O-rutinoside
Extract Form	: Powder and liquid
Packaging	: 1 kg, 5 kg, 25 kg; Labeled HDPE packaging
Cosmetics	: Hair care, skin care products, balms, ointments
Food Supplements	: Natural preservative, lozenge, fruit powder
Beverage Flavoring	: Jam, vinegar, liquor, tea, syrup
Pet Health, Food, Cosmetics	: Vegetable fertilizer mixtures, cat/dog food
Herbal Medicine	: Supplement effervescent tablets, vitamins
Cleaning Product	: Solid/liquid soap
Type	: Organic Certified, Conventional

The chemical structure of the Elderberry plant consists of flavonoids, phenolic acids, anthocyanidins, triterpenes, lectins, cyanogenic heterosides and essential oils. elderberry fruits show high antioxidant activity with their rich anthocyanin content. The anthocyanin content of elderberry fruit extract consists of cyanidin derivatives.



EVERLASTING (IMMORTELLE) EXTRACT *Helichrysum italicum*

Active Ingredients	: Neryl esters (acetate, propanate, isobutyrate), α -pinene, γ -curcumene
Extract Form	: Powder and liquid
Packaging	: 1 kg, 5 kg, 25 kg; Labeled HDPE packaging
Cosmetics	: Anti-aging, skin care, wound healing, perfume, cream
Food Supplements	: Spices, distilled water
Beverage Flavoring	: Herbal tea, bile tea, flower water
Herbal Medicine	: Pediatric syrup, aging serum, insecticide and repellent
Cleaning Product	: Soap
Type	: Organic Certified, Conventional

Everlasting (immortelle) contains essential oils. The amount of essential oil averages around 0.3% and the main constituent is the neryl acetate molecule.



COMMON JUNIPER FRUIT EXTRACT *Juniperus sp. fruit*

Active Ingredients	: α -Pinene
Extract Form	: Liquid
Packaging	: 1 kg, 5 kg, 25 kg; Labeled HDPE packaging
Cosmetics	: Anti-Aging products
Food Supplements	: Balms, pastiles and oil
Beverage Flavoring	: Pastiles and spice
Type	: Organic Certified, Conventional

Common Juniper promotes skin renewal and delays aging due to its phenolic compounds and Citral component



Greenext uses the power of innovation and scientific thinking to improve itself and its stakeholders. It does not focus on the present, analyzes trends and acts proactively about the future. It works on different technologies and transforms them into benefits with its expertise.

VOLATILE OILS





TURKISH OREGANO ESSENTIAL OIL *Origanum onites*

Essential oil (2-3%); carvacrol

Thymol, γ -terpinene, α -terpinene, α -pinene, p -cymene, Borneol, Linalool

Turkish Oregano is obtained from the leaves by distillation with water vapor. Essential oil content in Turkish Oregano is around 2-3% and its main component is the compound carvacrol.

Turkish Oregano belongs to the genus *Origanum* of the Lamiaceae family. It is naturally distributed in Turkey, especially in the Aegean and Western Mediterranean regions. This species is distinguished from other *Origanum* species by its small ball-like flower clusters. Turkish Oregano is a perennial, herbaceous plant, blooms white flowers in April-June depending on the region. The height of the plant, which branches in large numbers, varies between 40-80 cm. Stems and leaves are hairy.

The leaves are green in color with light white veins. The upper part of the plant dries up in winter. In spring, new shoots, branching and flowering occur.



ROSEMARY LEAF ESSENTIAL OIL *Rosmarinus officinalis* leaf

Essential oil; 1,8-cineole, alpha-pinene, camphor, diterpenes, caffeic acid derivatives; main component rosmarinic acid, flavonoids, triterpenes; oleanolic acid, ursolic acid. β -pinene, Sabinene, Limonene, p -cymene, Linalool, α -Phellandrene, α -terpinene, Myrcene

The leaves are the part used. The essential oil content is between 1-2% and the main component is 1,8-cineole and its ratio in the oil is between 40-60%.

Rosemary, which belongs to the Lamiaceae family, grows in countries located in the Mediterranean Basin. In Turkey, it is naturally distributed in Adana, Mersin and Antalya. Rosemary is a perennial, semi-woody and shrub-like plant. Depending on the season and temperature, it turns blue in early spring.

It blooms close to magenta-colored flowers. The height of the plant, which branches in large numbers, varies between 80-120 cm. It has green colored and unique, thin and long leaves.

Rosemary plant is green in all seasons throughout the year. It does not shed its leaves and the above-ground parts do not dry out in winter.



SAGE (MEDICINAL) ESSENTIAL OIL *Salvia officinalis*

The plant contains 2-3% essential oil. The main component of essential oil is 1,8-cineole and its ratio in essential oil varies between 35-65%.

The genus Sage, belonging to the Lamiaceae family, includes all the plants called sages. While there are approximately 900 species in the world, around 100 species are naturally distributed in our country. Sage (Medicinal) is the species called Anatolian Sage in our country.

Sage, a perennial plant, is 100-120 cm tall and in shrub form. Sage, which has a high number of branches, has lilac-colored flowers. Its leaves are grayish-green and have a hairy, velvety texture. Sage sheds its leaves during the winter months; it regenerates new shoots in early spring.



LAVENDER OIL *Lavandula x intermedia*

Essential oil (4-6%): Linalyl acetate, Linalool, Camphor, 1,8-cineole, cis-ocimene, α -bisabolol, Neryl acetate, Caryophyllene, Borneol, Sabinene, Cymene, Terpinene-4-ol, Geranyl acetate, Geraniol

There are essential oils in the flowers, leaves and branches of the lavender plant. However, the most essential oil is in the flowers. The essential oil content in fresh flowers varies between 3-4%. The main components of essential oil are linalool and linalyl acetate compounds.

Lavender is a plant belonging to the Lamiaceae family. Lavender, which is naturally distributed in some European countries, is not included in the natural vegetation of Turkey. It is a perennial, semi-woody and shrub-shaped plant. It has a very strong root system. It blooms violet-colored flowers starting in June. The height of the plant, which branches in large numbers, varies between 80-120 cm and the habitus diameter between 1-2 m. Leaves are grayish green and have a unique thin and long structure. It does not shed its leaves and the above-ground parts do not dry out in winter, but plant growth stops. From spring onwards, fresh shoots, flower stalks and flowers are formed.



EVERLASTING (IMMORTELLE) ESSENTIAL OIL *Helichrysum italicum*

Neryl esters (acetate, propionate, isobutyrate...), α -pinene, γ -curcumin, β -Seline, Italicenes, trans- β -caryophyllene, Geraniol, Geranyl acetate, Linalool, Limonene, α -curcumene, α -copaene, β -pinene Everlasting (immortelle) oil contains flavonoids and terpenes. These substances prevent bacterial growth. If applied topically on the skin, it is good for conditions such as cuts, wounds and burns.

Everlasting (immortelle) flower oil; obtained by steam distillation. It is an effective wound healer. Everlasting (immortelle) essential oil has a dense structure like other oils. Compatible oils are rose, bergamot, vetiver, lavender and sandalwood essential oils.

Everlasting (immortelle) is a plant belonging to the Asteraceae family. It is naturally distributed in our country. It is a perennial, herbaceous plant. It has a very strong root system. Immortelle blooms yellow colored flowers starting in June. The height of the plant, which branches in large numbers, varies between 40-60 cm. Leaves are grayish green and have a unique thin and long structure.

It does not shed its leaves and the above-ground parts do not dry out in winter, but plant growth stops. From spring onwards, fresh shoots, flower stalks and flowers are formed.



LEMON BALM ESSENTIAL OIL *Melissa officinalis*

Essential oil (0.5-1%); limonene, geraniol, neral

The essential oils of the lemongrass plant are obtained by water vapor distillation.

Lemon Balm is a plant species belonging to the Verbenaceae family. It is one of the native species of South America and lives all year round in areas close to the Equator. Lemongrass is a shrubby, semi-woody plant that forms many branches and grows very fast. Generally, its height is around 150-200 cm. However, where it is used as an ornamental plant, it can exceed 3 meters in height. The leaves are elongated and pointed and have a very distinct lemon scent.

In Turkey, the upper part of the plant dries up completely in winter and grows again in spring.

ORGANIC COMPLEX LIST

PRODUCT NAME	INCI NAME	CAS NO.
Brightening Complex	<i>Rosa canina</i> fruit extract <i>Myrtus communis</i> leaf extract <i>Glycyrrhiza glabra</i> root extract <i>Rubus fruticosus</i> leaf extract	84696-47-9 84082-67-7 84775-66-6 84787-69-9
Anti-Aging Complex	<i>Helichrysum italicum</i> extract <i>Origanum onites</i> extract <i>Juniperus communis</i> fruit extract <i>Olea europea</i> leaf extract	90045-56-0 84012-24-8 84603-69-0 8001-25-0
Moisturising Complex	<i>Hypericum perforatum</i> extract <i>Foeniculum vulgare</i> seed extract <i>Chamomilla recutita</i> extract <i>Lavandula angustifolia</i> extract <i>Laurus nobilis</i> leaf extract	84082-80-4 92623-75-1 84082-60-0 90063-37-9 84603-73-6
Hair Care Complex	<i>Olea europaea</i> leaf extract <i>Rosmarinus officinalis</i> leaf extract <i>Achillea millefolium</i> extract <i>Lavandula angustifolia</i> extract <i>Salvia officinalis</i> extract <i>Thymus vulgaris</i> extract <i>Allium sativum</i> bulb extract	8001-25-0 84604-14-8 84082-83-7 90063-37-9 84082-79-1 84929-51-1 8008-99-9
Anti-Blemish Complex	<i>Glycyrrhiza glabra</i> root extract <i>Rosa canina</i> fruit extract <i>Hypericum perforatum</i> extract <i>Myrtus communis</i> leaf extract	84775-66-6 84696-47-9 84082-80-4 84082-67-7
Soothing Complex	<i>Chamomilla recutita</i> extract <i>Lavandula angustifolia</i> extract <i>Hypericum perforatum</i> extract <i>Salvia officinalis</i> extract <i>Foeniculum vulgare</i> seed extract	84082-60-0 90063-37-9 84082-80-4 84082-79-1 92623-75-1



ETKO ORGANIC
CERTIFICATE



COSMOS CERTIFIED
INGREDIENT



USDA ORGANIC
NOP CERTIFICATE

TYPES OF PACKING



ORGANIC EXTRACT LIST

PRODUCT NAME	INCI NAME	CAS NO.
Laurel Leaf Extract	<i>Laurus nobilis</i> leaf extract	84603-73-6
Blackberry Leaf Extract	<i>Rubus fruticosus</i> leaf extract	84787-69-9
German Chamomile Extract	<i>Chamomilla recutita</i> extract	84082-60-0
Juniper Berry Fruit Extract	<i>Juniperus communis</i> fruit extract	84603-69-0
Sage (Medicinal) Extract	<i>Salvia officinalis</i> extract	84082-79-1
Thyme Extract	<i>Thymus vulgaris</i> extract	84929-51-1
Turkish Oregano Extract	<i>Origanum onites</i> extract	84012-24-8
Everlasting (immortelle) Extract	<i>Helichrysum italicum</i> extract	90045-56-0
Rosahip Fruit Extract	<i>Rosa canina</i> fruit extract	84696-47-9
Fennel Seed Extract	<i>Foeniculum vulgare</i> seed extract	92623-75-1
Field Horsetail Leaf Extract	<i>Equisetum arvense</i> leaf extract	71011-23-9
Garlic Extract	<i>Allium sativum</i> bulb extract	8008-99-9
Lavender (English Lavender) Extract	<i>Lavandula angustifolia</i> extract	90063-37-9
Licorice Root Extract	<i>Glycyrrhiza glabra</i> root extract	84775-66-6
Myrtle Leaf Extract	<i>Myrtus communis</i> leaf extract	84082-67-7
Olive Leaf Extract	<i>Olea europea</i> leaf extract	8001-25-0
St John's-Wort Extract	<i>Hypericum perforatum</i> extract	84082-80-4
Rosemary Leaf Extract	<i>Rosmarinus officinalis</i> leaf extract	84604-14-8
Yarrow Extract	<i>Achillea millefolium</i> extract	84082-83-7



ETKO ORGANIC
CERTIFICATE



COSMOS CERTIFIED
INGREDIENT



USDA ORGANIC
NOP CERTIFICATE

TYPES OF PACKING



1Kg.

5Kg.

25Kg.



%5 ORGANIC EXTRACT LIST

PRODUCT NAME	INCI NAME	CAS NO.
Laurel Leaf Extract	<i>Laurus nobilis</i> leaf extract	84603-73-6
Blackberry Leaf Extract	<i>Rubus fruticosus</i> leaf extract	84787-69-9
German Chamomile Extract	<i>Chamomilla recutita</i> extract	84082-60-0
Juniper Berry Fruit Extract	<i>Juniperus communis</i> fruit extract	84603-69-0
Sage (Medicinal) Extract	<i>Salvia officinalis</i> extract	84082-79-1
Thyme Extract	<i>Thymus vulgaris</i> extract	84929-51-1
Turkish Oregano Extract	<i>Origanum onites</i> extract	84012-24-8
Everlasting (immortelle) Extract	<i>Helichrysum italicum</i> extract	90045-56-0
Rosahip Fruit Extract	<i>Rosa canina</i> fruit extract	84696-47-9
Fennel Seed Extract	<i>Foeniculum vulgare</i> seed extract	92623-75-1
Field Horsetail Leaf Extract	<i>Equisetum arvense</i> leaf extract	71011-23-9
Garlic Extract	<i>Allium sativum</i> bulb extract	8008-99-9
Lavender (English Lavender) Extract	<i>Lavandula angustifolia</i> extract	90063-37-9
Licorice Root Extract	<i>Glycyrrhiza glabra</i> root extract	84775-66-6
Myrtle Leaf Extract	<i>Myrtus communis</i> leaf extract	84082-67-7
Olive Leaf Extract	<i>Olea europea</i> leaf extract	8001-25-0
St John's-Wort Extract	<i>Hypericum perforatum</i> extract	84082-80-4
Pot Marigold Flower Extract	<i>Calendula officinalis</i> flower extract	84776-23-8
Rosemary Leaf Extract	<i>Rosmarinus officinalis</i> leaf extract	84604-14-8
Yarrow Extract	<i>Achillea millefolium</i> extract	84082-83-7



ETKO ORGANIC
CERTIFICATE



COSMOS CERTIFIED
INGREDIENT



USDA ORGANIC
NOP CERTIFICATE

TYPES OF PACKING



1Kg.

5Kg.

25Kg.



CONVENTIONAL COMPLEX LIST

PRODUCT NAME	INCI NAME	CAS NO.
Brightening Complex	<i>Rosa canina</i> fruit extract <i>Myrtus communis</i> leaf extract <i>Glycyrrhiza glabra</i> root extract <i>Rubus fruticosus</i> leaf extract	84696-47-9 84082-67-7 84775-66-6 84787-69-9
Anti-Aging Complex	<i>Helichrysum italicum</i> extract <i>Origanum onites</i> extract <i>Juniperus communis</i> fruit extract <i>Olea europea</i> leaf extract	90045-56-0 84012-24-8 84603-69-0 8001-25-0
Moisturising Complex	<i>Hypericum perforatum</i> extract <i>Foeniculum vulgare</i> seed extract <i>Chamomilla recutita</i> extract <i>Lavandula angustifolia</i> extract <i>Laurus nobilis</i> leaf extract	84082-80-4 92623-75-1 84082-60-0 90063-37-9 84603-73-6
Collagen Complex	<i>Rubus fruticosus</i> leaf extract, <i>Vaccinium myrtillus</i> fruit extract, <i>Arbutus unedo</i> fruit extract, <i>Citrus sinensis</i> peel extract,	84787-69-9 84082-34-8 84012-12-4 8008-57-9
Anti-Blemish Complex	<i>Glycyrrhiza glabra</i> root extract <i>Rosa canina</i> fruit extract <i>Hypericum perforatum</i> extract <i>Myrtus communis</i> leaf extract	84775-66-6 84696-47-9 84082-80-4 84082-67-7
Soothing Complex	<i>Chamomilla recutita</i> extract <i>Lavandula angustifolia</i> extract <i>Hypericum perforatum</i> extract <i>Salvia officinalis</i> extract <i>Foeniculum vulgare</i> seed extract	84082-60-0 90063-37-9 84082-80-4 84082-79-1 92623-75-1



ETKO ORGANIC
CERTIFICATE



COSMOS CERTIFIED
INGREDIENT



USDA ORGANIC
NOP CERTIFICATE

TYPES OF PACKING



1Kg.

5Kg.

25Kg.

CONVENTIONAL COMPLEX LIST

PRODUCT NAME	INCI NAME	CAS NO.
Seven Herbs Extract	<i>Chamomilla recutita</i> extract	84082-60-0
	<i>Salvia officinalis</i> extract	84082-79-1
	<i>Rosmarinus officinalis</i> leaf extract	84604-14-8
	<i>Equisetum arvense</i> leaf extract	71011-23-9
	<i>Humulus lupulus</i> extract	8060-28-4
	<i>Urtica dioica</i> leaf extract	84012-40-8
	<i>Melissa officinalis</i> leaf extract	84082-61-1
Green 5 Complex	<i>Camellia sinensis</i> leaf extract	84650-60-2
	<i>Cassia angustifolia</i> leaf extract	85187-05-9
	<i>Piper nigrum</i> seed extract	84929-41-9
	<i>Salvia officinalis</i> extract	84082-79-1
	<i>Urtica dioica</i> leaf extract	84012-40-8
Greenext G17 Complex	<i>Actinidia deliciosa</i> fruit extract	92456-63-8
	<i>Camellia sinensis</i> leaf extract	84650-60-2
	<i>Vitis vinifera</i> seed extract	84929-27-1
Greenext G25 Complex	<i>Allium cepa</i> bulb extract	8054-39-5
	<i>Citrus sinensis</i> peel extract	8008-57-9
	<i>Junglas nigra</i> peel extract	84012-43-1
	<i>Citrus limon</i> peel extract	92346-89-9
Greenext G35 Complex	<i>Calendula officinalis</i> flower extract	84776-23-8
	<i>Chamomilla recutita</i> extract	84082-60-0
	<i>Rosmarinus officinalis</i> leaf extract	84604-14-8
	<i>Helichrysum italicum</i> extract	90045-56-0
	<i>Equisetum arvense</i> leaf extract	71011-23-9



ETKO ORGANIC
CERTIFICATE



COSMOS CERTIFIED
INGREDIENT



USDA ORGANIC
NOP CERTIFICATE

TYPES OF PACKING



1Kg.

5Kg.

25Kg.

CONVENTIONAL COMPLEX LIST

PRODUCT NAME	INCI NAME	CAS NO.
Greenext G36 Complex	<i>Laurus nobilis</i> leaf extract <i>Rubus fruticosus</i> leaf extract <i>Salix alba</i> bark extract	84603-73-6 84787-69-9 84082-82-6
Greenext G64 Complex	<i>Dioscorea alata</i> extract <i>Mentha piperita</i> leaf extract <i>Rosa canina</i> fruit extract	84082-70-2 84696-47-9
Greenext G70 Complex	<i>Triticum spp.</i> extract <i>Persea americana</i> extract <i>Prunus amygdalus</i> extract <i>Vitis vinifera</i> seed extract	84012-44-2 8024-32-6 90320-37-9 84929-27-1
Natural Burn Complex	<i>Betula alba</i> leaf extract <i>Rosmarinus officinalis</i> leaf extract <i>Capsicum annuum</i> extract <i>Aesculus hippocastanum</i> extract <i>Rosmarinus officinalis</i> <i>Origanum onites</i>	85940-29-0 84604-14-8 84625-29-6 8053-39-2 84604-14-8 90082-27-2
Mcu Complex	<i>Malva sylvestris</i> flower extract <i>Chamomilla recutita</i> extract <i>Urtica dioica</i> extract	84082-57-5 84082-60-0 84012-40-8
Herba Pet Complex	<i>Betula alba</i> leaf extract <i>Salvia officinalis</i> extract <i>Rosmarinus officinalis</i> leaf extract <i>Chamomilla recutita</i> extract <i>Glycyrrhiza glabra</i> root extract <i>Camellia sinensis</i> leaf extract <i>Aloe barbadensis</i> leaf extract	85940-29-0 84082-79-1 84604-14-8 84082-60-0 84775-66-6 84650-60-2 85507-69-3



ETKO ORGANIC
CERTIFICATE



COSMOS CERTIFIED
INGREDIENT



USDA ORGANIC
NOP CERTIFICATE

TYPES OF PACKING



1Kg.

5Kg.

25Kg.

CONVENTIONAL EXTRACT LIST

PRODUCT NAME	INCI NAME	CAS NO.
Aleppo Oak Extract	<i>Quercus infectoria</i> gall extract	93165-57-2
Almond Extract	<i>Prunus amygdalus</i> extract	90320-37-9
Aloe Vera Extract	<i>Aloe barbadensis</i> leaf extract	85507-69-3
Apple Extract	<i>Pyrus malus</i> fruit extract	85251-63-4
Avocado Extract	<i>Persea gratissima</i> fruit extract	8024-32-6
Laurel Leaf Extract	<i>Laurus nobilis</i> leaf extract	84603-73-6
Baby's Breath Extract	<i>Gypsophila paniculata</i> extract	94167-03-0
Beet Extract	<i>Beta vulgaris</i> root extract	89957-89-1/89957-90-4
Black Carrot Juice Extract	<i>Daucus carota sativa</i> root juice extract	84929-61-3
Black Mulberry Extract	<i>Morus nigra</i> fruit extract	90064-11-2
Black Pepper Seed Extract	<i>Piper nigrum</i> seed extract	84929-41-9
Black Rice Extract	<i>Oryza sativa</i> extract	90106-37-9
Black Walnut Leaf Extract	<i>Juglans nigra</i> leaf extract	84012-43-1
Black Walnut Peel Extract	<i>Junglas nigra</i> peel extract	84012-43-1
Blackberry Leaf Extract	<i>Rubus fruticosus</i> leaf extract	84787-69-9
Blueberries Fruit Extract	<i>Vaccinium myrtillus</i> fruit extract	84082-34-8
Burdock Extract	<i>Arctium majus</i> root extract	84649-87-6
Carrot Root Extract	<i>Daucus carota sativa</i> root extract	84929-61-3
German Chamomile Extract	<i>Chamomilla recutita</i> extract	84082-60-0



ETKO ORGANIC
CERTIFICATE



COSMOS CERTIFIED
INGREDIENT



USDA ORGANIC
NOP CERTIFICATE

TYPES OF PACKING



1Kg.

5Kg.

25Kg.

CONVENTIONAL EXTRACT LIST

PRODUCT NAME	INCI NAME	CAS NO.
Chokeberry Extract	<i>Aronia melanocarpa</i> fruit extract	1197991-17-5
Cleavers Extract	<i>Galium aparine</i> extract	84625-42-3
Coconut Extract	<i>Cocos nucifera</i> fruit extract	8001-31-8
Common Ginger Root Extract	<i>Zingiber officinale</i> root extract	84696-15-1
Common Ivy Leaf Extract	<i>Hedera helix</i> leaf extract	84082-54-2
Common Juniper Fruit Extract	<i>Juniperus sp.</i> fruit extract	84603-69-0
Common Mallow Extract	<i>Malva sylvestris</i> leaf extract	84082-57-5
Common Nettle Extract	<i>Urtica dioica</i> leaf extract	84012-40-8
Common Onion Extract	<i>Allium cepa</i> bulb extract	8054-39-5
Common Purslane Seed Extract	<i>Portulaca oleracea</i> seed extract	90083-07-1
Common Soapwort Extract	<i>Saponaria officinalis</i> extract	84775-97-3
Thyme Extract	<i>Thymus vulgaris</i> extract	84929-51-1
Common Wheat Extract	<i>Triticum spp.</i> extract	84012-44-2
Common Wormwood Extract	<i>Artemisia absinthium</i> extract	84929-19-1
Cornflower Extract	<i>Centaurea cyanus</i> extract	84012-18-0
Cucumber Extract	<i>Cucumis sativus</i> fruit extract	89998-01-6
Cucumber Juice Extract	<i>Cucumis sativus</i> juice extract	89998-01-6
Cumin Extract	<i>Cuminum cyminum</i> root extract	84775-51-9
Curcumin Extract	<i>Curcuma longa</i> root extract	84775-52-0
Everlasting (immortelle) Extract	<i>Helichrysum italicum</i> extract	90045-56-0



ETKO ORGANIC
CERTIFICATE



COSMOS CERTIFIED
INGREDIENT



USDA ORGANIC
NOP CERTIFICATE

TYPES OF PACKING



1Kg.

5Kg.

25Kg.

CONVENTIONAL EXTRACT LIST

PRODUCT NAME	INCI NAME	CAS NO.
Elderberry Extract	<i>Sambucus nigra</i> extract	84603-58-7
Fennel Seed Extract	<i>Foeniculum vulgare</i> seed extract	92623-75-1
Field Horsetail Leaf Extract	<i>Equisetum arvense</i> leaf extract	71011-23-9
Fig Extract	<i>Ficus carica</i> fruit extract	90028-74-3
Garlic Extract	<i>Allium sativum</i> bulb extract	8008-99-9
Grapefruit Extract	<i>Citrus paradisi</i> fruit extract	8016-20-4
Ginseng Extract	<i>Panax sp.</i> extract	90045-38-8
Goji Berries Extract	<i>Lycium barbarum</i> fruit extract	85085-46-7
Gotu Kola Extract	<i>Centella asiatica</i> extract	84696-21-9
Grape Seed Extract	<i>Vitis vinifera</i> seed extract	84929-27-1
Great Mullein Extract	<i>Verbascum thapsus</i> extract	90064-13-4
Green Tea Extract	<i>Camellia sinensis</i> leaf extract	84650-60-2
Henna Extract	<i>Lawsonia inermis</i> extract	84988-66-9
Hops Extract	<i>Humulus lupulus</i> extract	8060-28-4
Horse Chestnut Extract	<i>Aesculus hippocastanum</i> extract	8053-39-2
Jasmine Extract	<i>Jasminum officinale</i> extract	90045-94-6
Kiwi Extract	<i>Actinidia chinensis</i> fruit extract	92456-63-8
Lady's Mantle Extract	<i>Alchemilla vulgaris</i> extract	84695-94-3
Lavender Extract	<i>Lavandula angustifolia</i> extract	90063-37-9



ETKO ORGANIC
CERTIFICATE



COSMOS CERTIFIED
INGREDIENT



USDA ORGANIC
NOP CERTIFICATE

TYPES OF PACKING



CONVENTIONAL EXTRACT LIST

PRODUCT NAME	INCI NAME	CAS NO.
Lemon Balm Extract	<i>Melissa officinalis</i> extract	84082-61-1
Lemon Peel Extract	<i>Citrus limon</i> peel extract	92346-89-9
Licorice Root Extract	<i>Glycyrrhiza glabra</i> root extract	84775-66-6
Mango Extract	<i>Mangifera indica</i> fruit extract	90063-86-8
Maritime Pine Bark Extract	<i>Pinus pinaster</i> bark extract	90082-75-0
Milkvetch Extract	<i>Astragalus sp.</i> extract	94166-93-5
Myrtle Leaf Extract	<i>Myrtus communis</i> leaf extract	84082-67-7
Olive Leaf Extract	<i>Olea europea</i> extract	8001-25-0
Passion Fruit Extract	<i>Passiflora edulis</i> fruit extract	91770-48-8
Peppermint Leaf Extract	<i>Mentha piperita</i> leaf extract	84082-70-2
Perforate St. John's Wort Extract	<i>Hypericum perforatum</i> extract	84082-80-4
Plantain Leaf Extract	<i>Plantago lanceolata</i> leaf extract	85085-64-9
Pomegranate Extract	<i>Punica granatum</i> fruit extract	84961-57-9
Pot Marigold Extract	<i>Calendula officinalis</i> flower extract	84776-23-8
Purple Coneflower Extract	<i>Echinacea angustifolia</i> extract	84696-11-7
Purple Potato Extract	<i>Dioscorea alata</i> extract	-
Rose Extract	<i>Rosa damascena</i> flower extract	90106-38-0
Rosahip Fruit Extract	<i>Rosa canina</i> fruit extract	84696-47-9
Rosemary Leaf Extract	<i>Rosmarinus officinalis</i> leaf extract	84604-14-8



ETKO ORGANIC
CERTIFICATE



COSMOS CERTIFIED
INGREDIENT



USDA ORGANIC
NOP CERTIFICATE

TYPES OF PACKING



1Kg.

5Kg.

25Kg.

CONVENTIONAL EXTRACT LIST

PRODUCT NAME	INCI NAME	CAS NO.
Quinoa Seed Extract	<i>Chenopodium quinoa</i> seed extract	223749-71-1
Sage (Medicinal) Extract	<i>Salvia officinalis</i> extract	84082-79-1
Saw Palmetto Extract	<i>Serenoa serrulata</i> extract	84604-15-9
Silkworm Cocoon Extract	<i>Bombyx mori coccum</i> extract	-
Silver Birch Extract	<i>Betula alba</i> leaf extract	85940-29-0
Spanish Lavender Extract	<i>Lavandula stoechas</i> extract	90063-38-0
Spirulina Extract	<i>Spirulina platensis</i> extract	223751-80-2
Strawberry Fruit Extract	<i>Fragaria vesca</i> fruit extract	84929-78-2
Sweet And Chili Pepper Extract	<i>Caspicum annum</i> extract	84625-29-6
Sweet Orange Peel Extract	<i>Citrus sinensis</i> peel extract	8008-57-9
Tea Tree Extract	<i>Melaleuca alternifolia</i> extract	85085-48-9
Tomato Extract	<i>Solanum lycopersicum</i> extract	90131-63-8
Valerian Extract	<i>Valeriana officinalis</i> extract	8057-49-6
Watermelon Seed Extract	<i>Citrullus lanatus</i> seed extract	90244-99-8
White Willow Peel Extract	<i>Salix alba</i> bark extract	84082-82-6
Wild Strawberry Fruit Extract	<i>Arbutus unedo</i> fruit extract	84012-12-4
Wild Strawberry Leaf Extract	<i>Arbutus unedo</i> leaf extract	84012-12-4
Yarrow Extract	<i>Achillea millefolium</i> extract	84082-83-7



ETKO ORGANIC
CERTIFICATE



COSMOS
CERTIFIED
INGREDIENT



USDA ORGANIC
NOP CERTIFICATE

TYPES OF PACKING



1Kg.

5Kg.

25Kg.

NOP ORGANIC HYDROSOL LIST

PRODUCT NAME	INCI NAME	CAS NO.
Bay Laurel Hydrosol	<i>Laurus nobilis</i> leaf	84603-73-6
Chamomile Hydrosol	<i>Chamomilla recutita</i>	84082-60-0
Common Nettle Hydrosol	<i>Urtica dioica</i>	84012-40-8
Sage (Medicinal) Hydrosol	<i>Salvia officinalis</i>	84082-79-1
Thyme Hydrosol	<i>Thymus vulgaris</i>	84929-51-1
Turkish Origanó Hydrosol	<i>Origanum onites</i>	90082-27-2
Everlasting(immortelle) Hydrosol	<i>Helichrysum italicum</i>	90045-56-0
Fennel Seed Hydrosol	<i>Foeniculum vulgare</i>	92623-75-1
Field Horsetail Leaf Hydrosol	<i>Equisetum arvense</i> leaf	71011-23-9
Lavender (English Lavender) Hydrosol	<i>Lavandula angustifolia</i>	90063-37-9
Lemon Balm Hydrosol	<i>Melissa officinalis</i>	84082-61-1
Licorice Root Hydrosol	<i>Glycyrrhiza glabra</i> root	84775-66-6
Myrtle Leaf Hydrosol	<i>Myrtus communis</i> leaf	84082-67-7
Olive Leaf Hydrosol	<i>Olea europaea</i> leaf	8001-25-0
Peppermint Hydrosol	<i>Mentha piperita</i> leaf	84082-70-2
Pot Marigold Hydrosol	<i>Calendula officinalis</i> flower	84776-23-8
Rosemary Leaf Hydrosol	<i>Rosmarinus officinalis</i> leaf	84604-14-8
Silver Birch Leaf Hydrosol	<i>Betula alba</i> leaf	84012-15-7
Small-Leaved Linden Hydrosol	<i>Tilia argentea</i>	90063-54-0
Yarrow Hydrosol	<i>Achillea millefolium</i>	84082-83-7



ETKO ORGANIC
CERTIFICATE



ETKO ORGANIC
COSMOS CERTIFIED
INGREDIENT



USDA ORGANIC
NOP CERTIFICATE

TYPES OF PACKING



1Kg.

5Kg.

25Kg.

CONVENTIONAL HYDROSOL LIST

PRODUCT NAME	INCI NAME	CAS NO.
Bay Laurel Hydrosol	<i>Laurus nobilis</i> leaf	84603-73-6
Chamomile Hydrosol	<i>Chamomilla recutita</i>	84082-60-0
Common Nettle Hydrosol	<i>Urtica dioica</i>	84012-40-8
Sage (Medicinal) Hydrosol	<i>Salvia officinalis</i>	84082-79-1
Thyme Hydrosol	<i>Thymus vulgaris</i>	84929-51-1
Turkish Origanon Hydrosol	<i>Origanum onites</i>	90082-27-2
Everlasting(immortelle) Hydrosol	<i>Helichrysum italicum</i>	90045-56-0
Fennel Seed Hydrosol	<i>Foeniculum vulgare</i>	92623-75-1
Field Horsetail Leaf Hydrosol	<i>Equisetum arvense</i> leaf	71011-23-9
Lavender (English Lavender) Hydrosol	<i>Lavandula angustifolia</i>	90063-37-9
Lemon Balm Hydrosol	<i>Melissa officinalis</i>	84082-61-1
Licorice Root Hydrosol	<i>Glycyrrhiza glabra</i> root	84775-66-6
Myrtle Leaf Hydrosol	<i>Myrtus communis</i> leaf	84082-67-7
Olive Leaf Hydrosol	<i>Olea europaea</i> leaf	8001-25-0
Peppermint Hydrosol	<i>Mentha piperita</i> leaf	84082-70-2
Pot Marigold Hydrosol	<i>Calendula officinalis</i> flower	84776-23-8
Rosemary Leaf Hydrosol	<i>Rosmarinus officinalis</i> leaf	84604-14-8
Silver Birch Leaf Hydrosol	<i>Betula alba</i> leaf	84012-15-7
Small-Leaved Linden Hydrosol	<i>Tilia argentea</i>	90063-54-0
Yarrow Hydrosol	<i>Achillea millefolium</i>	84082-83-7



ETKO ORGANIC
CERTIFICATE



COSMOS CERTIFIED
INGREDIENT



USDA ORGANIC
NOP CERTIFICATE

TYPES OF PACKING



1Kg.

5Kg.

25Kg.

NOP ORGANIC ESSENTIAL OIL LIST

PRODUCT NAME	INCI NAME	CAS NO.
Laurel Leaf Essential Oil	<i>Laurus nobilis</i> leaf	8007-48-5
German Chamomile Essential Oil	<i>Chamomilla recutita</i>	8002-66-2
Sage (Medicinal) Essential Oil	<i>Salvia officinalis</i>	8022-56-8
Thyme Essential Oil	<i>Thymus vulgaris</i>	84929-51-1
Turkish Oregano Essential Oil	<i>Origanum onites</i>	2.11.8007
Everlasting (immortelle) Essential Oil	<i>Helichrysum italicum</i>	90045-56-0
Fennel Seed Essential Oil	<i>Foeniculum vulgare</i> seed	8006-84-6
Lavender (English Lavender) Essential Oil	<i>Lavandula angustifolia</i>	8000-28-0
Lemon Balm Essential Oil	<i>Melissa officinalis</i>	8014-71-9
Myrtle Leaf Essential Oil	<i>Myrtus communis</i> leaf	8008-46-6
Peppermint Essential Oil	<i>Mentha piperita</i> leaf	8006-90-4
Rosemary Leaf Essential Oil	<i>Rosmarinus officinalis</i> leaf	8000-25-7
Small-Leaved Linden Oil	<i>Tilia argentea</i>	84961-64-8
Yarrow Essential Oil	<i>Achillea millefolium</i>	9.07.8022



ETKO ORGANIC
CERTIFICATE



COSMOS CERTIFIED
INGREDIENT



USDA ORGANIC
NOP CERTIFICATE

TYPES OF PACKING



1Kg.

5Kg.

25Kg.

CONVENTIONAL ESSENTIAL OIL LIST

PRODUCT NAME	INCI NAME	CAS NO.
Everlasting (immortelle) Essential Oil	<i>Helichrysum italicum</i>	90045-56-0
Laurel Leaf Essential Oil	<i>Laurus nobilis leaf</i>	8007-48-5
Lavender (English Lavender) Essential Oil	<i>Lavandula angustifolia</i>	8000-28-0
Lavender Essential Oil	<i>Lavandula intermedia</i>	92623-76-2
Myrtle Leaf Essential Oil	<i>Myrtus communis leaf</i>	8008-46-6
Peppermint Essential Oil	<i>Mentha piperita leaf</i>	8006-90-4
Rosemary Leaf Essential Oil	<i>Rosmarinus officinalis leaf</i>	8000-25-7
Sage (Medicinal) Essential Oil	<i>Salvia officinalis</i>	8022-56-8
Thyme Essential Oil	<i>Thymus vulgaris</i>	84929-51-1
Turkish Oregano Essential Oil	<i>Origanum onites</i>	2.11.8007



ETKO ORGANIC
CERTIFICATE



COSMOS
CERTIFIED
INGREDIENT



USDA ORGANIC
NOP CERTIFICATE

TYPES OF PACKING



1Kg.

5Kg.

25Kg.

NOP ORGANIC MACERATED OIL LIST

PRODUCT NAME	INCI NAME	CAS NO.
Garlic Macerated Oil	<i>Allium sativum</i> bulb	8000-78-0
St John's-Wort Macerated Oil	<i>Hypericum perforatum</i>	84082-80-4
Pot Marigold Flower Macerated Oil	<i>Calendula officinalis</i> flower	70892-20-5

CONVENTIONAL MACERATED OIL LIST

PRODUCT NAME	INCI NAME	CAS NO.
Horse Chestnut Macerated Oil	<i>Aesculus hippocastanum</i>	8053-39-2
Garlic Macerated Oil	<i>Allium sativum</i> bulb	8000-78-0
German Chamomile Macerated Oil	<i>Chamomilla recutita</i>	84082-60-0
Perforate St. John's Wort Macerated Oil	<i>Hypericum perforatum</i>	84082-80-4
Pot Marigold Extract Macerated Oil	<i>Calendula officinalis</i> flower	70892-20-5

NOP ORGANIC OIL LIST

PRODUCT NAME	INCI NAME	CAS NO.
Olive Oil	<i>Olea europaea</i>	
Sunflower Oil	<i>Helianthus annuus</i>	



ETKO ORGANIC
CERTIFICATE



COSMOS
CERTIFIED
INGREDIENT



USDA ORGANIC
NOP CERTIFICATE

TYPES OF PACKING



1Kg.

5Kg.

25Kg.



Greenext; does not become part of a process that has a negative impact on animals. We see the power of nature as the source of our sustainable success.





Acipayam
DENİZLİ



Our Contracted Farmers

The Greenext team, working in coordination with contract farmers, initiates the standardized productization process starting from the seed. A solution plan is prepared by listening to all the problems of the farmers one by one. Plants from which herbal extracts are taken are grown with an agricultural method that respects nature and animals.



Greenext

Sustain the Success



For katalog
scan the QR code.



For website
scan the QR code.



For Success Chain™
scan the QR code.

Factory

Saipler Mh. Philsa Cad. No: 219 Torbalı / İzmir
+90 532 427 77 56